



Ref: L35521/BH/20-156

16 December 2021

KIS Plant Pty Ltd
c/- Groundwork Plus
6 Mayneview Street
MILTON QLD 4064

Attention: Mr Jim Lawler

Dear Jim

Re: December 2021 Noise Compliance Monitoring – Coraki Quarry, Coraki

Noise compliance monitoring was conducted for the Coraki Quarry in December 2021 in accordance with Condition 5(c) of the Development Consent Schedule 3.

Noise monitoring was undertaken between 9:30am and 12:00pm on 10 December 2021.

KIS Plant Pty Ltd (trading as KIS Quarries) has advised that no noise complaints have been received in relation to the Coraki Quarry since the previous September 2021 noise monitoring event.

Weather conditions were fine (no rainfall). Winds were from westerly directions and were generally between 3 and 6 metres per second assessed using the on-site weather station. As the Development Consent wind speed threshold for valid compliance monitoring is 3 metres per second, the measurements were paused / excluded during higher wind speed gust periods.

For certain locations/measurements, extraneous noise influences included:

- Wind / tree noise – wind gust periods were paused / excluded from the measurements to the extent possible
- Bird calls – able to be substantially but not completely filtered out through post-processing using audio recordings
- Public road traffic noise - filtered out through on-site data exclusion where practical but was not completely filtered out

Coraki Quarry operations during the noise monitoring period were as follows:

- Main crushing and screening plant
- Excavator sorting and loading material
- Loading plant from ROM pad
- Stockpile management
- Loading and dispatch of product (road) trucks

Noise monitoring was undertaken over generally 15 minute periods at free-field locations within 30 metres of the following three (3) residential dwellings nearest to the Coraki Quarry (refer **Figure 1**):

- R1
- R4
- R6

Noise monitoring was undertaken using a Bruel & Kjaer Type 2250 frequency analysing sound level meter. The sound level meter was calibrated to a reference signal of 94 dB at 1kHz prior to the monitoring and displayed no variance post-monitoring.

Condition 4 of the Development Consent Schedule 3 prescribes a 35 dB(A) $L_{Aeq,15min}$ noise limit for privately owned residences unless formal written agreements are in place with landowners.

As allowed for by Development Consent Schedule 3 Condition 4 and EPL Condition L4.2, formal written agreements are in place with the following landowners to the effect that the landowners do not hold objections to the operation of the Coraki Quarry exceeding the noise emission criterion by up to 5 dB(A):

- R1: 200 Lagoon Road, Coraki
- R6: 1905 Casino-Coraki Road, Coraki

As allowed for by Development Consent Schedule 3 Condition 4 and EPL Condition L4.2, formal written agreements are in place with the following landowners to the effect that the landowners do not hold objections to the operation of the Coraki Quarry exceeding the noise emission criterion:

- R2: 95 Spring Hill Road, Coraki
- R3: 75 Spring Hill Road, Coraki
- R7: 140 Newmans Road, Coraki

On the basis of the agreements in place with the owners of 95 Spring Hill Road, 75 Spring Hill Road and 140 Newmans Road there was no requirement for assessment of compliance with the noise limits at R2, R3 and R7.

A summary of the 10 December 2021 compliance noise monitoring is provided in **Attachment 1**.

During the 10 December 2021 noise monitoring period the Coraki Quarry was assessed to be compliant with the Development Consent and Environment Protection Licence No. 3397 noise limits at two of three monitoring locations.

At the third monitoring location the ambient background noise was elevated to the extent that the quarry noise level could not be quantified. Notwithstanding, the quarry noise was below the ambient background noise and was not assessed to be at a nuisance level during the noise monitoring period.

Wind conditions during the 10 December 2021 compliance noise monitoring were at times above the threshold for valid compliance assessment in accordance with the Development Consent.

It is noted that the past five compliance monitoring assessments dating back to September 2020, since the quarry has been operated by KIS Plant Pty Ltd, have been compliant with the Development Consent and Environment Protection Licence No. 3397 noise limits.

Further noise compliance monitoring is required by 31 March 2021 in accordance with Condition 5(c) of the Development Consent Schedule 3.

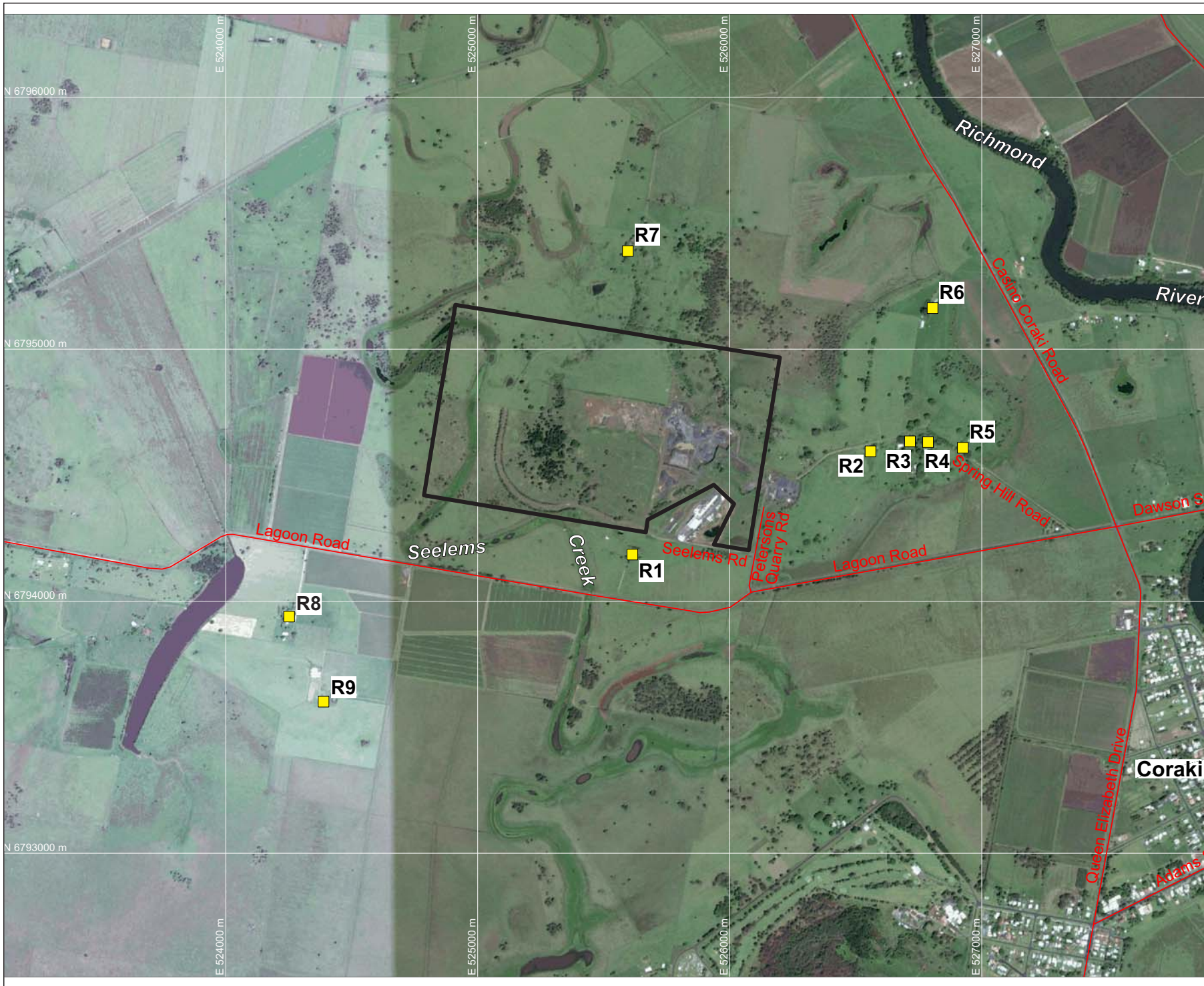
If you require any clarification or additional information please contact the undersigned.

Yours sincerely



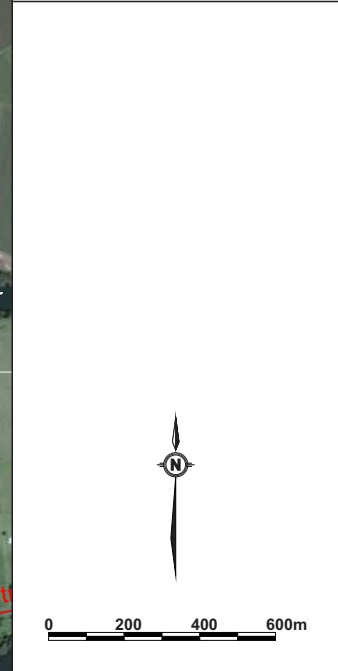
Ben Hyde
Senior Environmental Engineer

FIGURES



LEGEND
 — SITE BOUNDARY
 ■ R9 SURROUNDING RESIDENCES (R1-R9)

DRAWING REFERENCE
 GROUNDWATER PLUS SITE LOCATION PLAN
 1837.DRG.002, 13/04/15.



CLIENT
KIS PLANT PTY LTD

PROJECT
**CORAKI
 NOISE COMPLIANCE
 ASSESSMENT
 CORAKI QUARRY**
 Petersons Quarry Rd Coraki NSW

TITLE
**AERIAL PHOTOGRAPH
 SHOWING SURROUNDING
 RESIDENCES**

JOB	CORAKI	FIGURE 1
JOB NO.	15-041	
DATE	16/12/16	DRAWING NUMBER
SCALE	1:20,000 (A4)	15-041-1
REV.		

Max Winders & Associates Pty Ltd tas MWA Environmental
 Level 15, 241 Adelaide St, Brisbane, GPO BOX 3137, Brisbane Qld 4001
 P 07 3002 5500 F 07 3002 5588 E mail@mwaenviro.com.au
 W www.mwaenviro.com.au
 ABN 94 010 833 084

ATTACHMENT 1

Summary of Compliance Noise Monitoring

10/12/2021

MONITORING LOCATION	TIME	WIND	ASSESSED QUARRY NOISE Leq - dB(A)	OPERATIONS	NOISE LIMIT LAeq dB(A)	STATUS	NOTES
R1	955	3 to 5 m/s W (measurement periods isolated for lower wind speeds only)	<39	Normal Operations with drilling	40	Compliant	Wind/trees especially during gusts (high wind speed gusts excluded / paused to extent possible), occasional clunk audible, primary crusher rumble just audible once, occasional truck audible 42, overall quarry <40 Bkg between gusts, overall quarry below 39dBA L90 and generally inaudible
R6	1050	3 to 6 m/s W (measurement periods isolated for lower wind speeds only)	< 44dBA Ambient Background	Normal Operations with drilling	40	Below background, not measureable but not at nuisance level	Wind/trees especially during gusts, wind noise fairly consistently and not able to be paused / excluded, primary crusher rumble audible at times, occasional tips audible, some birds and Casino-Coraki Rd noise, overall quarry below background noise but level not assessable
R4	1120	3 to 6 m/s WNW (measurement periods isolated for lower wind speeds only)	<35	Normal Operations with drilling	35	Compliant	Wind/trees especially during gusts (high wind speed gusts excluded / paused to extent possible), primary crusher rumble just audible at times, Lagoon Rd traffic excluded to extent practical, cicadas at times, birds excluded to extent possible, several louder clunks, overall quarry below background noise