



Ref: L26721/BH/20-156

27 September 2021

KIS Plant Pty Ltd
c/- Groundwork Plus
6 Mayneview Street
MILTON QLD 4064

Attention: Mr Jim Lawler

Dear Jim

Re: September 2021 Noise Compliance Monitoring – Coraki Quarry, Coraki

Noise compliance monitoring was conducted for the Coraki Quarry in September 2021 in accordance with Condition 5(c) of the Development Consent Schedule 3.

Noise monitoring was undertaken between 10:00am and 12:00pm on 20 September 2021.

KIS Plant Pty Ltd (trading as KIS Quarries) has advised that no noise complaints have been received in relation to the Coraki Quarry since the previous July 2021 noise monitoring event.

Weather conditions were fine (no rainfall). Winds were from northerly and northwesterly directions. The wind conditions during the monitoring were assessed using the on-site weather station data to be below the 3 metres per second threshold for valid compliance monitoring in accordance with the Development Consent. For two measurements the monitoring was paused to exclude short periods of higher wind speed.

For certain locations/measurements, extraneous noise influences included:

- Bird calls – generally able to be substantially but not completely filtered out through post-processing using audio recordings
- Public road traffic noise - filtered out through on-site data exclusion where practical but was the dominant noise influence for two measurements

Coraki Quarry operations during the noise monitoring period were as follows:

- Main crushing and screening plant
- Excavator sorting and loading material
- Loading plant from ROM pad
- Stockpile management
- Loading and dispatch of product (road) trucks
- Rock drilling

Noise monitoring was undertaken over generally 15 minute periods at free-field locations within 30 metres of the following four (4) residential dwellings nearest to the Coraki Quarry (refer **Figure 1**):

- R1
- R4
- R6
- R7

Noise monitoring was undertaken using a Bruel & Kjaer Type 2250 frequency analysing sound level meter. The sound level meter was calibrated to a reference signal of 94 dB at 1kHz prior to the monitoring and displayed no variance post-monitoring.

Condition 4 of the Development Consent Schedule 3 prescribes a 35 dB(A) $L_{Aeq,15min}$ noise limit for privately owned residences unless formal written agreements are in place with landowners.

As allowed for by Development Consent Schedule 3 Condition 4 and EPL Condition L4.2, formal written agreements are in place with the following landowners to the effect that the landowners do not hold objections to the operation of the Coraki Quarry exceeding the noise emission criterion by up to 5 dB(A):

- R1: 200 Lagoon Road, Coraki
- R6: 1905 Casino-Coraki Road, Coraki
- R7: 140 Newmans Road, Coraki

As allowed for by Development Consent Schedule 3 Condition 4 and EPL Condition L4.2, formal written agreements are in place with the following landowners to the effect that the landowners do not hold objections to the operation of the Coraki Quarry exceeding the noise emission criterion:

- R2: 95 Spring Hill Road, Coraki
- R3: 75 Spring Hill Road, Coraki

On the basis of the agreements in place with the owners of 95 Spring Hill Road and 75 Spring Hill Road there was no requirement for assessment of compliance with the noise limits at R2 and R3.

A summary of the 20 September 2021 compliance noise monitoring is provided in **Attachment 1**.

During the 20 September 2021 noise monitoring period the Coraki Quarry was assessed to be compliant with the Development Consent and Environment Protection Licence No. 3397 noise limits.

Further noise compliance monitoring is required by 31 December 2021 in accordance with Condition 5(c) of the Development Consent Schedule 3.

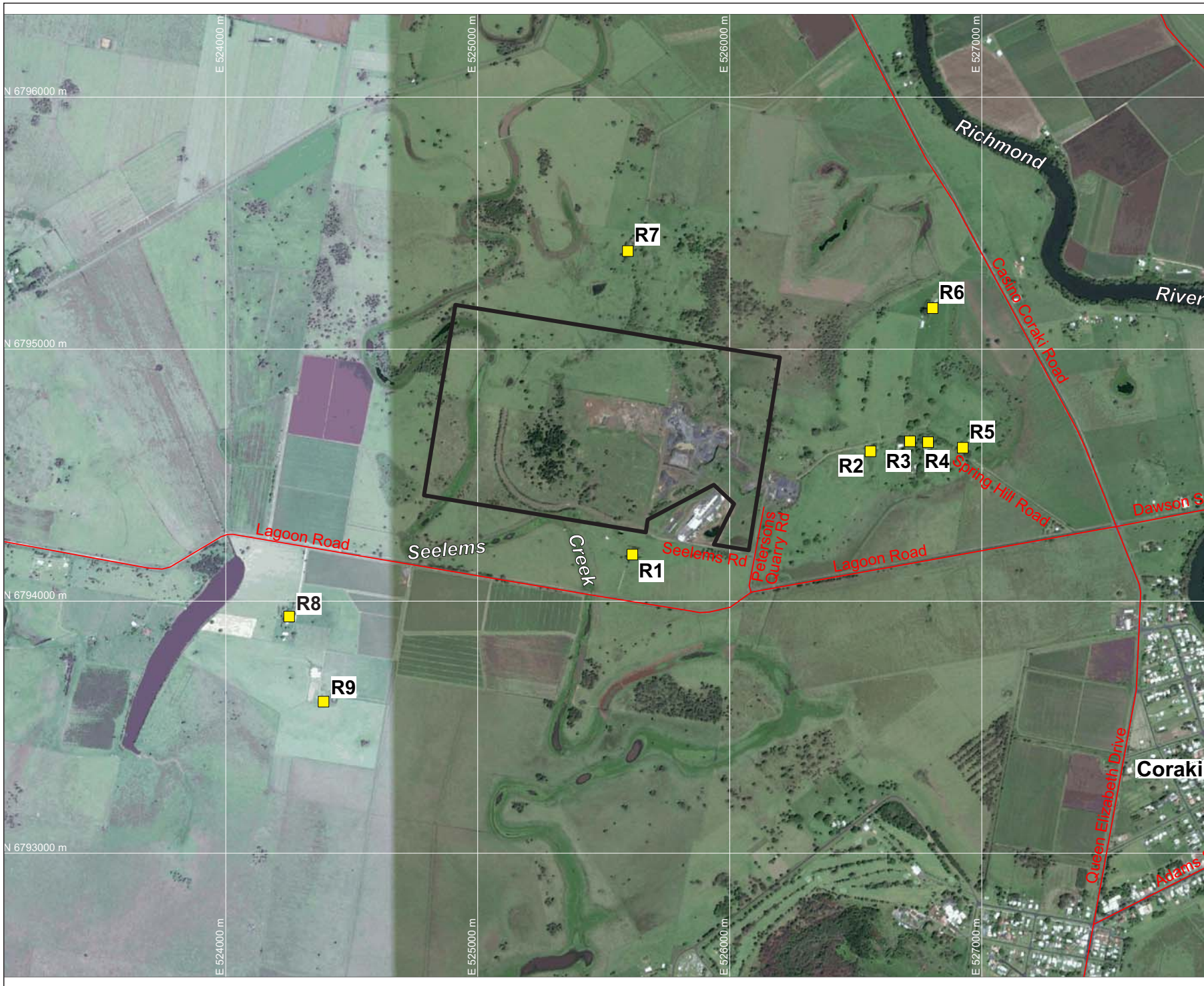
If you require any clarification or additional information please contact the undersigned.

Yours sincerely



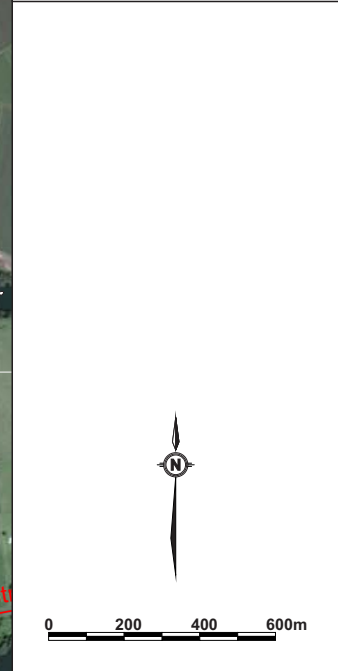
Ben Hyde
Senior Environmental Engineer

FIGURES



LEGEND
 — SITE BOUNDARY
 ■ R9 SURROUNDING RESIDENCES (R1-R9)

DRAWING REFERENCE
 GROUNDWATER PLUS SITE LOCATION PLAN
 1837.DRG.002, 13/04/15.



CLIENT
KIS PLANT PTY LTD

PROJECT
**CORAKI
 NOISE COMPLIANCE
 ASSESSMENT
 CORAKI QUARRY**
 Petersons Quarry Rd Coraki NSW

TITLE
**AERIAL PHOTOGRAPH
 SHOWING SURROUNDING
 RESIDENCES**

JOB	CORAKI	FIGURE 1
JOB NO.	15-041	
DATE	16/12/16	DRAWING NUMBER
SCALE	1:20,000 (A4)	15-041-1
REV.		

Max Winders & Associates Pty Ltd tas MWA Environmental
 Level 15, 241 Adelaide St, Brisbane, GPO BOX 3137, Brisbane Qld 4001
 P 07 3002 5500 F 07 3002 5588 E mail@mwaenviro.com.au
 W www.mwaenviro.com.au
 ABN 94 010 833 084

ATTACHMENT 1

Summary of Compliance Noise Monitoring

CORAKI 20-156

20/09/2021

MONITORING LOCATION	TIME	WIND	ASSESSED QUARRY NOISE Leq - dB(A)	OPERATIONS	NOISE LIMIT LAeq dB(A)	STATUS	NOTES
R7	1015	1.3m/s NNW => 2.5m/s NW	<33	Normal Operations with drilling	40	Compliant	Casino-Coraki Road noise from north, some birds, some resident TV noise, quarry inaudible, < background noise
R6	1035	3m/s N	<33	Normal Operations with drilling	40	Compliant	Casino-Coraki Road noise from NE, some resident phone conversation, drill breakout audible twice for a few seconds, wind gust periods excluded, some birds
R4	1055	2.2m/s NW	<34	Normal Operations with drilling	35	Compliant	Cows (nearby and frequent mooing, shuffling), birds, crushing plant audible at times including jaw, crushing <L90, <35, plane excluded
R1	1115	3m/s N	<36	Normal Operations with drilling	40	Compliant	Wind/trees at times (excluded generally), road trucks on quarry access road, significant birds at times, processing plant just audible at 1120am, resident started power tools so had to cease measurement, overall quarry < background L90