



Ref: L09521/BH/20-156

1 April 2021

KIS Plant Pty Ltd  
c/- Groundwork Plus  
6 Mayneview Street  
MILTON QLD 4064

**Attention: Mr Jim Lawler**

Dear Jim

**Re: March 2021 Noise Compliance Monitoring – Coraki Quarry, Coraki**

Noise compliance monitoring was conducted for the Coraki Quarry in March 2021 in accordance with Condition 5(c) of the Development Consent Schedule 3.

Noise monitoring was undertaken between 8:00am and 10:30am on 26 March 2021.

KIS Plant Pty Ltd (trading as KIS Quarries) has advised that no noise complaints have been received in relation to the Coraki Quarry since the previous December 2020 noise monitoring event.

Weather conditions were fine (no rainfall). Winds were from westerly directions. The wind conditions during the monitoring were assessed using the on-site weather station data to be below the 3 metres per second threshold for valid compliance monitoring in accordance with the Development Consent.

For certain locations/measurements, extraneous noise influences included:

- Bird calls – generally able to be substantially but not completely filtered out through post-processing using audio recordings
- Cicada noise – significant for periods
- Public road traffic noise - filtered out through on-site data exclusion where practical

Coraki Quarry operations during the noise monitoring period were as follows:

- Main crushing and screening plant
- Excavator sorting and loading material
- Loading dump trucks by excavator and haulage from pit to plant
- Stockpile management
- Loading and dispatch of product (road) trucks
- No rock drill operating

Noise monitoring was undertaken over generally 15 minute periods at free-field locations within 30 metres of the following four (4) residential dwellings nearest to the Coraki Quarry (refer **Figure 1**):

- R1
- R4
- R6
- R7

Noise monitoring was undertaken using a Bruel & Kjaer Type 2250 frequency analysing sound level meter. The sound level meter was calibrated to a reference signal of 94 dB at 1kHz prior to the monitoring and displayed no variance post-monitoring.

Condition 4 of the Development Consent Schedule 3 prescribes a 35 dB(A)  $L_{Aeq,15min}$  noise limit for privately owned residences unless formal written agreements are in place with landowners.

As allowed for by Development Consent Schedule 3 Condition 4 and EPL Condition L4.2, formal written agreements are in place with the following landowners to the effect that the landowners do not hold objections to the operation of the Coraki Quarry exceeding the noise emission criterion by up to 5 dB(A):

- R1: 200 Lagoon Road, Coraki
- R6: 1905 Casino-Coraki Road, Coraki
- R7: 140 Newmans Road, Coraki

As allowed for by Development Consent Schedule 3 Condition 4 and EPL Condition L4.2, formal written agreements are in place with the following landowners to the effect that the landowners do not hold objections to the operation of the Coraki Quarry exceeding the noise emission criterion:

- R2: 95 Spring Hill Road, Coraki
- R3: 75 Spring Hill Road, Coraki

On the basis of the agreements in place with the owners of 95 Spring Hill Road and 75 Spring Hill Road there was no requirement for assessment of compliance with the noise limits at R2 and R3.

A summary of the 26 March 2021 compliance noise monitoring is provided in **Attachment 1**.

**During the 26 March 2021 noise monitoring period the Coraki Quarry was assessed to be compliant with the Development Consent and Environment Protection Licence No. 3397 noise limits.**

Further noise compliance monitoring is required by 30 June 2021 in accordance with Condition 5(c) of the Development Consent Schedule 3.

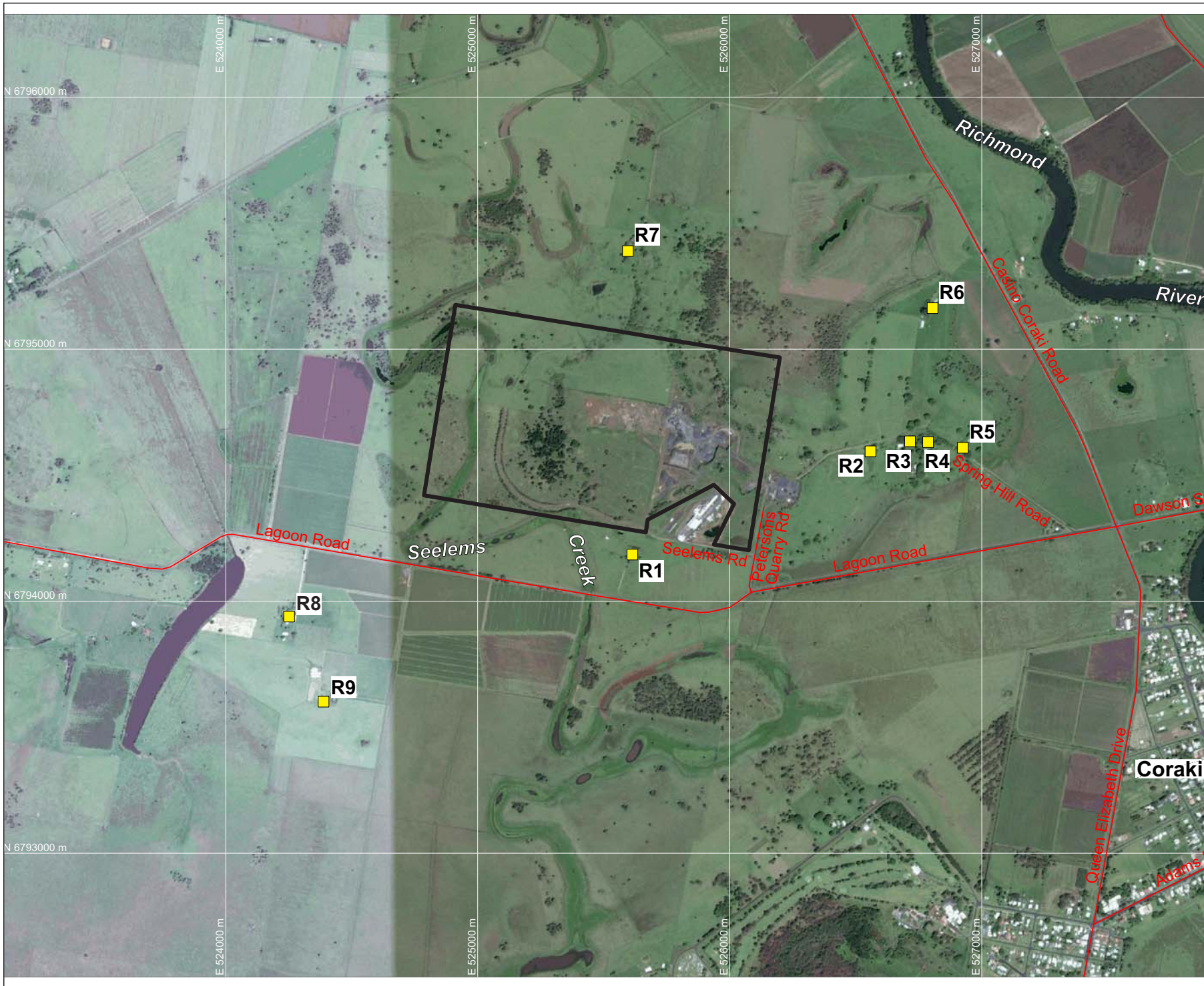
If you require any clarification or additional information please contact the undersigned.

Yours sincerely

A handwritten signature in black ink, appearing to read 'Ben Hyde', written in a cursive style.

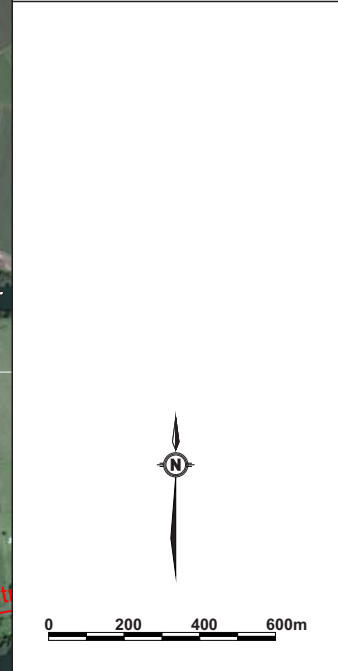
Ben Hyde  
Senior Environmental Engineer

## FIGURES



**LEGEND**  
 — SITE BOUNDARY  
 ■ R9 SURROUNDING RESIDENCES (R1-R9)

**DRAWING REFERENCE**  
 GROUNDWATER PLUS SITE LOCATION PLAN  
 1837.DRG.002, 13/04/15.



CLIENT  
**KIS PLANT PTY LTD**

PROJECT  
**CORAKI  
 NOISE COMPLIANCE  
 ASSESSMENT  
 CORAKI QUARRY**  
 Petersons Quarry Rd Coraki NSW

TITLE  
**AERIAL PHOTOGRAPH  
 SHOWING SURROUNDING  
 RESIDENCES**

JOB	CORAKI	<b>FIGURE 1</b>
JOB NO.	15-041	
DATE	16/12/16	DRAWING NUMBER
SCALE	1:20,000 (A4)	<b>15-041-1</b>
REV.		

  
 Max Winders & Associates Pty Ltd tas MWA Environmental  
 Level 15, 241 Adelaide St, Brisbane, GPO BOX 3137, Brisbane Qld 4001  
 P 07 3002 5500 F 07 3002 5588 E mail@mwaenviro.com.au  
 W www.mwaenviro.com.au  
 ABN 94 010 833 084

# **ATTACHMENT 1**

*Summary of Compliance Noise Monitoring*

26/03/2021

MONITORING LOCATION	TIME	WIND	ASSESSED QUARRY NOISE Leq - dB(A)	OPERATIONS	NOISE LIMIT LAeq dB(A)	STATUS	NOTES
R7	815	2.7m/s W	<33dBA	Normal Operations no drilling	40	Compliant	Birds mostly distant but nearby excluded, distant traffic, cows, resident noise after 8:28am, some minor cicada noise, occasional tip audible, processing plant not audible when bkg<35dBA, quarry well below background L90
R1	845	1.8m/s NW	<35dBA	Normal Operations no drilling	40	Compliant	Distant traffic noise, birds, some insects, some noise from resident, barely audible tonal whine (sounds like concrete pre-cast plant), processing plant inaudible when bkg<35dBA, occasional truck and FEL just audible at 37dBA, quarry <35dBA
R4	905	2.2m/s WNW	<32	Normal Operations no drilling	35	Compliant	Washing machine spin noise at start till 9:10:20am, quarry not audible with bkg 33dBA, heli excluded, plant shutdown at 9:20am for smoko so measurement stopped
R6	1005	2.7m/s WSW	<37dBA	Normal Operations no drilling	40	Compliant	Some wind/tree noise, plant whiny/screening noise approx. 38dBA early but approx. 36dBA later + occasional tip/jaw, chickens