



Ref: L31819/BH/15-041

10 October 2019

Quarry Solutions Pty Ltd
c/- Groundwork Plus
6 Mayneview Street
MILTON QLD 4064

Attention: Mr Jim Lawler

Dear Jim

Re: October 2019 Noise Compliance Monitoring – Coraki Quarry, Coraki

MWA Environmental conducted noise compliance monitoring for the Coraki Quarry in October 2019 in accordance with Condition 5(c) of the Development Consent Schedule 3.

Noise monitoring was undertaken between 6:45am and 11:00am on 2 October 2019.

On 30 September 2019, MWA Environmental notified the Department of Planning, Industry and Environment and the Environment Protection Authority of a minor delay in the programmed quarterly monitoring program as a result of unsuitable weather conditions, a breakdown of the main processing plant for several days and annual leave for MWA Environmental staff. Department of Planning, Industry and Environment and the Environment Protection Authority confirmed acceptance of the minor delay by email on 30 September 2019 (refer **Attachment 1**).

Quarry Solutions Pty Ltd has advised that no noise complaints have been received in relation to the Coraki Quarry since the previous June 2019 noise monitoring event.

Weather conditions during the monitoring period were fine with light winds from westerly directions prior to 9:00am and generally easterly directions thereafter. Wind conditions during the monitoring were assessed to be below the 3 metres per second threshold for valid compliance monitoring in accordance with the Development Consent.

For certain locations/measurements, extraneous noise influences included:

- Bird calls – generally able to be substantially but not completely filtered out through post-processing using audio recordings
- Public road traffic noise - filtered out through on-site data exclusion where practical however background noise from Casino-Coraki Road and Lagoon was dominant and relatively consistent during a number of measurements, especially when winds were from the easterly directions

Coraki Quarry operations during the noise monitoring period were as follows:

- Main crushing and screening plant
- Excavator sorting and loading material at an elevated bench
- Loading dump trucks by excavator and haulage from pit to plant
- Stockpile management
- Loading and dispatch of product (road) trucks – consistent trucks throughout the monitoring period
- Rock drilling at elevated bench

Noise monitoring was undertaken over generally 10 to 15 minute periods at free-field locations within 30 metres of the following four (4) residential dwellings nearest to the Coraki Quarry (refer **Figure 1**):

- R1
- R4
- R6
- R7

Noise monitoring was undertaken using a Bruel & Kjaer Type 2250 frequency analysing sound level meter. The sound level meter was calibrated to a reference signal of 94 dB at 1kHz prior to the monitoring and displayed no variance post-monitoring.

Condition 4 of the Development Consent Schedule 3 prescribes a 35 dB(A) $L_{Aeq,15min}$ noise limit for privately owned residences unless formal written agreements are in place with landowners.

As allowed for by Development Consent Schedule 3 Condition 4 and EPL Condition L4.2, formal written agreements are in place with the following landowners to the effect that the land owners do not hold objections to the operation of the Coraki Quarry exceeding the noise emission criterion by up to 5 dB(A):

- R1: 200 Lagoon Road, Coraki
- R6: 1905 Casino-Coraki Road, Coraki
- R7: 140 Newmans Road, Coraki

As allowed for by Development Consent Schedule 3 Condition 4 and EPL Condition L4.2, formal written agreements are in place with the following landowners to the effect that the land owners do not hold objections to the operation of the Coraki Quarry exceeding the noise emission criterion:

- R2: 95 Spring Hill Road, Coraki
- R3: 75 Spring Hill Road, Coraki

On the basis of the agreements in place with the owners of 95 Spring Hill Road and 75 Spring Hill Road there was no requirement for assessment of compliance with the noise limits at R2 and R3.

A summary of the 2 October 2019 compliance noise monitoring is provided in **Attachment 2**.

During the 2 October 2019 noise monitoring period the Coraki Quarry was assessed to be compliant with the Development Consent and Environment Protection Licence No. 3397 noise limits.

Further noise compliance monitoring is required by 30 December 2019 in accordance with Condition 5(c) of the Development Consent Schedule 3.

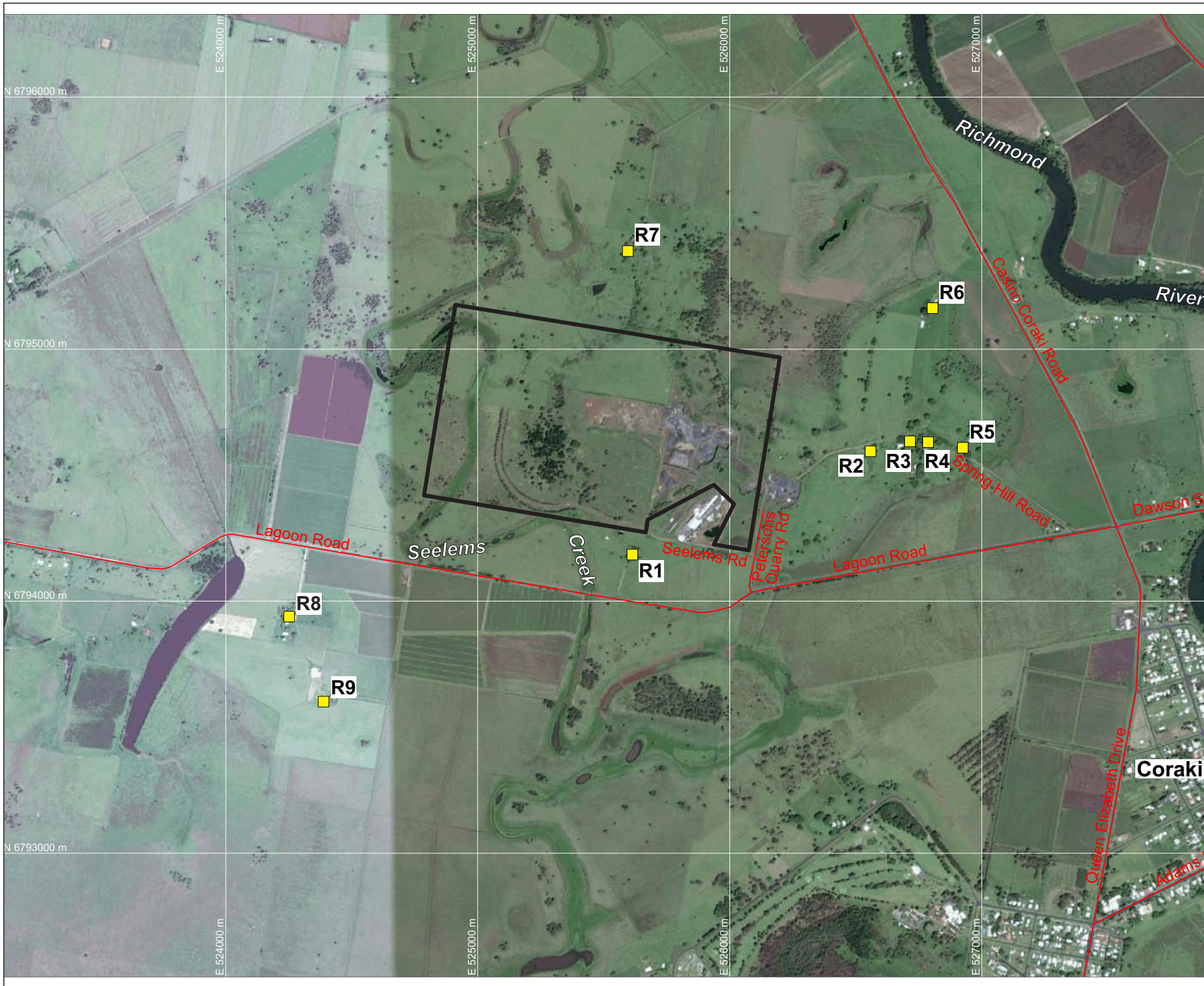
If you require any clarification or additional information please contact the undersigned.

Yours sincerely



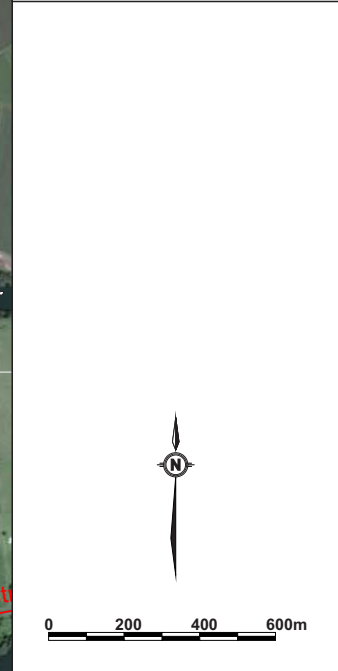
Ben Hyde
Environmental Engineer

FIGURES



LEGEND
 — SITE BOUNDARY
 ■ R9 SURROUNDING RESIDENCES (R1-R9)

DRAWING REFERENCE
 GROUNDWATER PLUS SITE LOCATION PLAN
 1837.DRG.002, 13/04/15.



CLIENT
QUARRY SOLUTIONS PTY LTD

PROJECT
**CORAKI
 NOISE COMPLIANCE
 ASSESSMENT
 CORAKI QUARRY**
 Petersons Quarry Rd Coraki NSW

TITLE
**AERIAL PHOTOGRAPH
 SHOWING SURROUNDING
 RESIDENCES**

JOB	CORAKI	FIGURE 1
JOB NO.	15-041	
DATE	16/12/16	DRAWING NUMBER
SCALE	1:20,000 (A4)	15-041-1
REV.		

Max Winders & Associates Pty Ltd tas MWA Environmental
 Level 15, 241 Adelaide St, Brisbane, GPO BOX 3137, Brisbane Qld 4001
 P 07 3002 5500 F 07 3002 5588 E mail@mwaenviro.com.au
 W www.mwaenviro.com.au
 ABN 94 010 833 084

ATTACHMENT 1

Email Correspondence Relating to Monitoring Delay

From: [Robert Donohoe](#)
To: [Shelley McPhee](#); [Ben Hyde](#); [Craig Dunk](#); [DPE PSVC Compliance Mailbox](#); [Janelle Bancroft](#)
Cc: [Brett Conlan](#); "[Murray Payne \(murray.payne@quarrysolutions.com.au\)](#)"; [Jim Lawler](#)
Subject: RE: Coraki Quarry (SSD 7036 / EPL No. 3397) - Notification of Quarterly Noise Monitoring Delay
Date: Monday, 30 September 2019 3:20:54 PM
Attachments: [image002.gif](#)
[image003.jpg](#)
[image004.jpg](#)
[image006.png](#)
[image005.png](#)

Hi Ben,

Consistent with Shelley's advice, the EPA understands the justification behind the delay in the September quarterly noise monitoring and has no objection to the proposed revised monitoring timeline, for completion by 4 October 2019.

Please also detail the reasons for the delayed noise monitoring in the Annual Return required to be submitted in compliance with EPL 3397, including a copy of this email train.

Regards

Rob

Robert Donohoe

Senior Operations Officer – North Coast

North Branch, NSW Environment Protection Authority

Ph: (02) 6640 2507 M: 0447 138 395

robert.donohoe@epa.nsw.gov.au www.epa.nsw.gov.au [@EPA NSW](#)

Report pollution and environmental incidents 131 555 (NSW only) or (02) 9995 5555



Frog_print



From: Shelley McPhee <Shelley.McPhee@planning.nsw.gov.au>

Sent: Monday, 30 September 2019 11:39 AM

To: Ben Hyde <BenH@mwaenviro.com.au>; Craig Dunk <Craig.Dunk@planning.nsw.gov.au>; DPE PSVC Compliance Mailbox <compliance@planning.nsw.gov.au>; Janelle Bancroft <Janelle.Bancroft@epa.nsw.gov.au>; Robert Donohoe <Robert.Donohoe@epa.nsw.gov.au>

Cc: Brett Conlan <brett.conlan@quarrysolutions.com.au>; 'Murray Payne (murray.payne@quarrysolutions.com.au)' <murray.payne@quarrysolutions.com.au>; Jim Lawler <jlawler@groundwork.com.au>

Subject: RE: Coraki Quarry (SSD 7036 / EPL No. 3397) - Notification of Quarterly Noise Monitoring Delay

Dear Ben,

Thank you for your voicemail and subsequent email this morning regarding a delay in the quarterly noise monitoring for Coraki Quarry. It is unfortunate that it has not been possible for the requisite monitoring to take place in September, however, the Department agrees to the monitoring taking place as soon as possible and completed by 4 October 2019.

Please ensure that the reasons for the lateness of monitoring is detailed in the monitoring report and the annual report, appending this email correspondence.

Regards,

Shelley McPhee
Team Leader Compliance – Far North Region

Compliance | Department of Planning, Industry and Environment

T 02 6670 8675 | **M** 0437 254 472 | **E** shelley.mcphee@planning.nsw.gov.au

PO Box 72, Murwillumbah NSW 2484 | 135 Murwillumbah Street, Murwillumbah NSW 2484

Please direct all email correspondence to compliance@planning.nsw.gov.au

www.dpie.nsw.gov.au

cid:image004.jpg@01D5300E.F307FCC0



The Department of Planning, Industry and Environment acknowledges that it stands on Aboriginal land. We acknowledge the traditional custodians of the land and we show our respect for elders past, present and emerging through thoughtful and collaborative approaches to our work, seeking to demonstrate our ongoing commitment to providing places in which Aboriginal people are included socially, culturally and economically.

From: Ben Hyde <BenH@mwaenviro.com.au>

Sent: Monday, 30 September 2019 10:44 AM

To: Shelley McPhee <Shelley.McPhee@planning.nsw.gov.au>; Craig Dunk <Craig.Dunk@planning.nsw.gov.au>; DPE PSVC Compliance Mailbox <compliance@planning.nsw.gov.au>; rob.donohoe@epa.nsw.gov.au; Janelle Bancroft <Janelle.Bancroft@epa.nsw.gov.au>

Cc: Brett Conlan <brett.conlan@quarrysolutions.com.au>; 'Murray Payne (murray.payne@quarrysolutions.com.au)' <murray.payne@quarrysolutions.com.au>; Jim Lawler <jlawler@groundwork.com.au>

Subject: Coraki Quarry (SSD 7036 / EPL No. 3397) - Notification of Quarterly Noise Monitoring Delay

Shelley, Craig, Janelle & Rob,

I am engaged by Quarry Solutions Pty Ltd to conduct quarterly noise monitoring at the Coraki Quarry in accordance with Development Consent (SSD 0736) Schedule 3 Condition 5(c).

The quarterly noise monitoring has historically been undertaken in March, June, September and December. The last quarterly noise monitoring was undertaken in June 2019.

I have called and left phone messages for each of you this morning to advise and request agreement for a minor delay in the programmed September 2019 compliance noise monitoring.

Monitoring was scheduled for the week commencing 16 September 2019 but a combination of unsuitable weather conditions and a breakdown of the main processing plant for several days did not allow for the monitoring to be undertaken.

Due to my programmed annual leave between 23 and 26 September 2019 and an unsuitable weather forecast on 27 September 2019 the monitoring could not be completed in that week.

Weather forecasts for today, 30 September 2019, indicated unsuitable conditions for compliance noise monitoring from 10am, which is insufficient time for the monitoring to be completed.

The programmed quarterly noise monitoring will thus not be completed in the September 2019 calendar month.

Available weather forecasts indicate that suitable conditions for the noise monitoring will occur between 2 and 4 October 2019. MWA Environmental intends to conduct the noise monitoring on either 2 or 3 October 2019, thus two to three days beyond the standard quarterly timeframe.

We apologise for the delay in conducting the monitoring due to the stated circumstances and request agreement from the Department of Planning and the EPA for the minor delay by return email at your earliest convenience.

Please contact me on (07) 3002 5500 if you wish to discuss further.

Regards,

Ben Hyde
Senior Environmental Engineer

Max Winders & Associates Pty Ltd tas
MWA Environmental



Lvl 15, 241 Adelaide Street
BRISBANE QLD 4000
(GPO BOX 3137, BRISBANE Q 4001)
Tel: 07 3002 5500
Fax: 07 3002 5588
Email: benh@mwaenviro.com.au
Web: www.mwaenviro.com.au

This email is intended for the addressee(s) named and may contain confidential and/or privileged information.

If you are not the intended recipient, please notify the sender and then delete it immediately.

Any views expressed in this email are those of the individual sender except where the sender expressly and with authority states them to be the views of the Environment Protection Authority.

PLEASE CONSIDER THE ENVIRONMENT BEFORE PRINTING THIS EMAIL

ATTACHMENT 2

Summary of Compliance Noise Monitoring

2/10/2019

MONITORING LOCATION	TIME	WIND	ASSESSED QUARRY NOISE Leq - dB(A)	OPERATIONS	NOISE LIMIT LAeq dB(A)	STATUS	NOTES
R1	745	0.9m/s W	<37dBA	Normal Operations including drilling	40	Compliant	Casino-Coraki Road and Lagoon Road traffic, a lot of birds, intermittent quarry truck noise at top stockpile pad at 40 to 45 dB(A), no other quarry noise audible when background <35dB(A)
R1	950	2.2m/s NE to 1.8m/s WNW	<37dBA	Normal Operations including drilling	40	Compliant	Birds, intermittent quarry truck noise at top stockpile pad at 37 to 42 dB(A), no other quarry noise audible
R4	715	0.9m/s WNW to 0.9m/s W	<33dBA	Normal Operations including drilling	35	Compliant	Casino-Coraki Road and Lagoon Road traffic, birds, cattle, quarry inaudible at 35dBA background, engine / exhaust noise just audible when background dropped to 32/33 dB(A)
R4	925	1.3m/s N to 0.9m/s NNW	<33dBA	Normal Operations including drilling	35	Compliant	Casino-Coraki Road and Lagoon Road traffic, birds, quarry inaudible when background <33dBA
R6	810	1.3m/s WNW to 0.9m/s N	<35dBA	Normal Operations including drilling	40	Compliant	Casino-Coraki Road traffic consistent, birds, processing plant including jaw crusher audible at 35-36dB(A) during WNW wind period for 5 minutes when background noise dropped but inaudible in N wind when background was <33dBA
R6	1015	1.3m/s E to 1.8m/s NE	<33dBA	Normal Operations including drilling	40	Compliant	Casino-Coraki Road traffic, planes and helicopter paused, birds, quarry inaudible when background <33dBA until 1023am when a period of processing plant was just audible at 32-33dBA
R7	905	2.7m/s ESE to 0.9m/s ESE	<34dBA	Normal Operations including drilling	40	Compliant	Casino-Coraki Road traffic, birds, dog at house, occasional truck engine and rock tip just audible at <35dBA background
R7	650	0.9m/s WNW to 0.9m/s SW	<34dBA	Normal Operations including drilling	40	Compliant	Casino-Coraki Road traffic, birds, dog at house, quarry inaudible