



Ref: L19421/BH/20-156

20 July 2021

KIS Plant Pty Ltd
c/- Groundwork Plus
6 Mayneview Street
MILTON QLD 4064

Attention: Mr Jim Lawler

Dear Jim

Re: July 2021 Noise Compliance Monitoring – Coraki Quarry, Coraki

Noise compliance monitoring was conducted for the Coraki Quarry in July 2021 in accordance with Condition 5(c) of the Development Consent Schedule 3.

Noise monitoring was undertaken between 11:00am and 1:30pm on 13 July 2021.

On 29 June 2021, Groundwork Plus Pty Ltd notified the Department of Planning, Industry and Environment of a minor delay in the programmed quarterly monitoring program as a result of unsuitable weather conditions, a breakdown of the main processing plant and COVID-19 restrictions. Department of Planning, Industry and Environment and the Environment Protection Authority confirmed acceptance of the minor delay by email on 29 June 2021 (refer **Attachment 1**).

KIS Plant Pty Ltd (trading as KIS Quarries) has advised that no noise complaints have been received in relation to the Coraki Quarry since the previous March 2021 noise monitoring event.

Weather conditions were fine (no rainfall). Winds were from westerly directions. The wind conditions during the monitoring were assessed using the on-site weather station data to be below the 3 metres per second threshold for valid compliance monitoring in accordance with the Development Consent.

For certain locations/measurements, extraneous noise influences included:

- Bird calls – generally able to be substantially but not completely filtered out through post-processing using audio recordings
- Public road traffic noise - filtered out through on-site data exclusion where practical

Coraki Quarry operations during the noise monitoring period were as follows:

- Main crushing and screening plant
- Excavator sorting and loading material
- Loading plant from ROM pad
- Stockpile management
- Loading and dispatch of product (road) trucks
- No rock drill operating

Noise monitoring was undertaken over generally 15 minute periods at free-field locations within 30 metres of the following four (4) residential dwellings nearest to the Coraki Quarry (refer **Figure 1**):

- R1
- R4
- R6
- R7

Noise monitoring was undertaken using a Bruel & Kjaer Type 2250 frequency analysing sound level meter. The sound level meter was calibrated to a reference signal of 94 dB at 1kHz prior to the monitoring and displayed no variance post-monitoring.

Condition 4 of the Development Consent Schedule 3 prescribes a 35 dB(A) $L_{Aeq,15min}$ noise limit for privately owned residences unless formal written agreements are in place with landowners.

As allowed for by Development Consent Schedule 3 Condition 4 and EPL Condition L4.2, formal written agreements are in place with the following landowners to the effect that the landowners do not hold objections to the operation of the Coraki Quarry exceeding the noise emission criterion by up to 5 dB(A):

- R1: 200 Lagoon Road, Coraki
- R6: 1905 Casino-Coraki Road, Coraki
- R7: 140 Newmans Road, Coraki

As allowed for by Development Consent Schedule 3 Condition 4 and EPL Condition L4.2, formal written agreements are in place with the following landowners to the effect that the landowners do not hold objections to the operation of the Coraki Quarry exceeding the noise emission criterion:

- R2: 95 Spring Hill Road, Coraki
- R3: 75 Spring Hill Road, Coraki

On the basis of the agreements in place with the owners of 95 Spring Hill Road and 75 Spring Hill Road there was no requirement for assessment of compliance with the noise limits at R2 and R3.

A summary of the 13 July 2021 compliance noise monitoring is provided in **Attachment 2**.

During the 13 July 2021 noise monitoring period the Coraki Quarry was assessed to be compliant with the Development Consent and Environment Protection Licence No. 3397 noise limits.

Further noise compliance monitoring is required by 30 September 2021 in accordance with Condition 5(c) of the Development Consent Schedule 3.

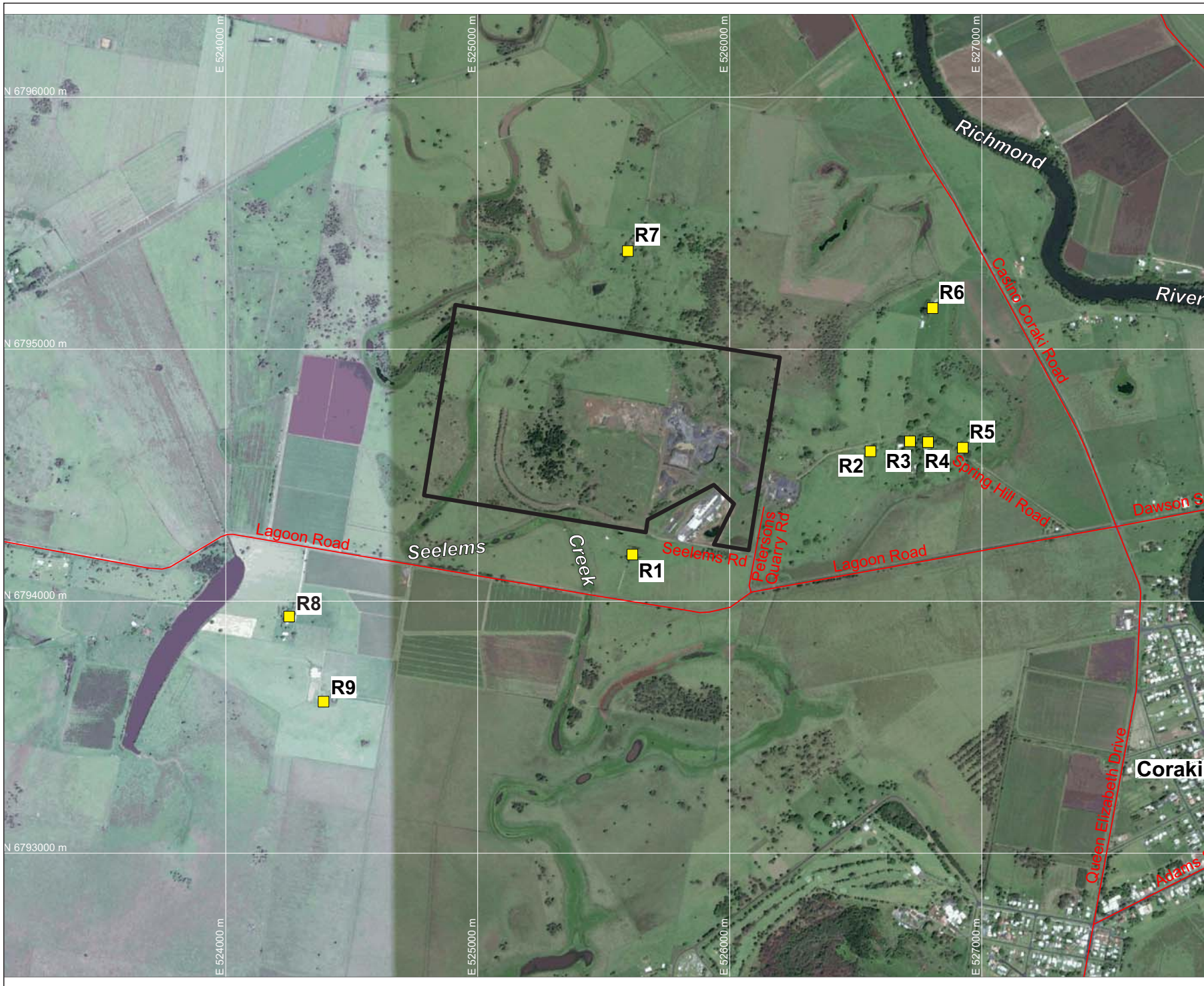
If you require any clarification or additional information please contact the undersigned.

Yours sincerely



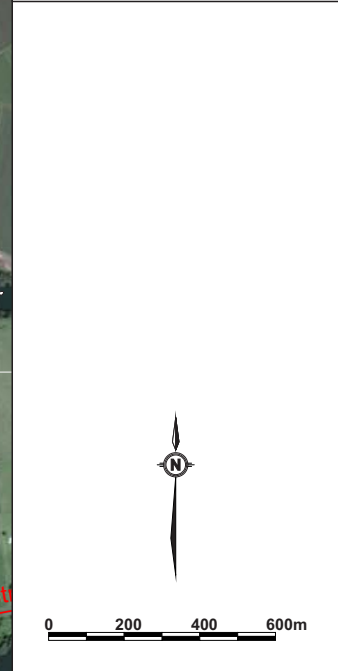
Ben Hyde
Senior Environmental Engineer

FIGURES



LEGEND
 — SITE BOUNDARY
 ■ R9 SURROUNDING RESIDENCES (R1-R9)

DRAWING REFERENCE
 GROUNDWATER PLUS SITE LOCATION PLAN
 1837.DRG.002, 13/04/15.



CLIENT
KIS PLANT PTY LTD

PROJECT
**CORAKI
 NOISE COMPLIANCE
 ASSESSMENT
 CORAKI QUARRY**
 Petersons Quarry Rd Coraki NSW

TITLE
**AERIAL PHOTOGRAPH
 SHOWING SURROUNDING
 RESIDENCES**

JOB	CORAKI	FIGURE 1
JOB NO.	15-041	
DATE	16/12/16	DRAWING NUMBER
SCALE	1:20,000 (A4)	15-041-1
REV.		


 Max Winders & Associates Pty Ltd tas MWA Environmental
 Level 15, 241 Adelaide St, Brisbane, GPO BOX 3137, Brisbane Qld 4001
 P 07 3002 5500 F 07 3002 5588 E mail@mwaenviro.com.au
 W www.mwaenviro.com.au
 ABN 94 010 833 084

ATTACHMENT 1

Email Correspondence Relating to Monitoring Delay

Ben Hyde

From: Phillip Rose <Phillip.Rose@planning.nsw.gov.au>
Sent: Tuesday, 29 June 2021 2:19 PM
To: Jim Lawler
Cc: Ben Hyde; Shelley McPhee
Subject: RE: SSD 7036 Coraki Quarry - Request for Delay of Quarterly Noise Monitoring

Hi Jim,

I thank you for the information and the phone call earlier regarding noise monitoring. Given the information provided, the Department provides an extension of time to **2 August 2021** for the collection for the June 2021 quarter noise monitoring.

This should not change the timing of quarterly monitoring for September onwards.

The change in monitoring frequency will constitute a non-compliance of the approval and management plans. However, just ensure that an incident notification in writing (your email below will suffice) is provided within 7 days to the planning portal in accordance with Schedule 5, Condition 7A. The project will need to include this information in the future compliance report, annual review and independent audit.

I hope this information is of assistance.

Kind Regards

Phillip Rose

Compliance Officer
Planning Services
Far Northern Region
NSW Department of Planning, Industry and Environment
PO Box 72 | MURWILLUMBAH NSW 2484
P:02 6670 8657
E: Phillip.Rose@planning.nsw.gov.au



Planning,
Industry &
Environment

If you are submitting a compliance document or request as required under the conditions of consent or approval, please note that the Department is no longer accepting lodgement via compliance@planning.nsw.gov.au.

The Department has recently upgraded the Major Projects Website to improve the timeliness and transparency of its post approval and compliance functions. As part of this upgrade, proponents are now requested to submit all post approval and compliance documents online, via the Major Projects Website. To do this, please refer to the instructions available [here](#).

From: Jim Lawler <jlawler@groundwork.com.au>
Sent: Tuesday, 29 June 2021 1:24 PM
To: Phillip Rose <Phillip.Rose@planning.nsw.gov.au>

Cc: Ben Hyde <BenH@mwaenviro.com.au>

Subject: RE: SSD 7036 Coraki Quarry - Request for Delay of Quarterly Noise Monitoring

Hi Phillip

As you are aware, Groundwork Plus Pty Ltd and MWA Environmental are engaged by KIS Quarries Pty Ltd in relation to the ongoing operation of the Coraki Quarry including quarterly noise monitoring at the Coraki Quarry in accordance with Development Consent (SSD 0736) Schedule 3 Condition 5(c).

The quarterly noise monitoring has historically been undertaken in March, June, September and December. The last quarterly noise monitoring was undertaken in March 2021 and was assessed to be compliant with the development consent and EPL noise limits.

Monitoring was scheduled for earlier this month but was cancelled due to weather conditions and rescheduled to occur yesterday (Monday 28 June 2021). However, yesterdays' monitoring was cancelled due to the processing plant not being operational.

MWA Environmental had scheduled to visit the site this afternoon or tomorrow, but weather conditions may not be favourable. Furthermore, MWA Environmental is based in Brisbane and travel arrangements due to COVID 19 border closures are uncertain with the real potential for the Queensland Government to declare NSW a Hotspot and impose a hard border closure.

Therefore, the programmed quarterly noise monitoring is unlikely to be completed before the end of June 2021.

We are hopeful that the monitoring can occur by Friday 9 July.

However, from an abundance of caution we request permission for delay of the monitoring for a period of up to 4 weeks (before Saturday 31 July 2021).

If border restrictions are imposed and MWA Environmental can not travel into NSW to undertake the monitoring, we are committed to engaging a local noise consultant to undertake the monitoring.

We apologise for the delay in conducting the monitoring due to the stated circumstances and request agreement from the Department for the minor delay by return email at your earliest convenience.

Kind regards,

Jim Lawler | Associate | Project Director



P: 1800 GW PLUS (1800 497 587) **F:** +61 7 3367 3317

E: jlawler@groundwork.com.au **W:** groundwork.com.au

6 Mayneview St, Milton QLD 4064 | PO Box 1779, Milton Qld 4064

We're working with you Australia-wide: QLD/NSW | SA/WA/NT | VIC/TAS



The information in this e-mail from Groundwork Plus together with any attachments is intended only for the person or entity to which it is addressed and may contain confidential and/or privileged material. Any form of review, disclosure, modification, distribution and/or publication of this e-mail message is expressly prohibited. If you have received this message in error, you are asked to inform the sender as quickly as possible and delete this message and any copies of this message from your computer and/or your computer system network. It is the recipient's responsibility to check any attachments for viruses before opening or sending them on.

ATTACHMENT 2

Summary of Compliance Noise Monitoring

13/07/2021

MONITORING LOCATION	TIME	WIND	ASSESSED QUARRY NOISE Leq - dB(A)	OPERATIONS	NOISE LIMIT LAeq dB(A)	STATUS	NOTES
R1	1106	1.8m/s NW	<34	Normal Operations no drilling	40	Compliant	Some wind/tree noise, some precast factory noise, occasional trucks on access road and top stockpiles audible, processing plant tips occasionally audible
R4	1143	1.8m/s NW	<32	Normal Operations no drilling	35	Compliant	Lagoon Road traffic noise, birds, processing plant barely audible and generally <background noise, quarry <35dBA and <L90, occasional jaw rumble 30-35dBA loud tip approx. 40dBA
R7	1216	2.2m/s NW	<32	Normal Operations no drilling	40	Compliant	Distant Casino-Coraki Road noise from north, birds, resident phone conversation, quarry generally inaudible aside from very occasional engine (FEL), processing plant not audible, quarry <background
R6	1240	1.8m/s WNW	<35	Normal Operations no drilling	40	Compliant	Jaw, processing plant and FEL audible but <35dBA, occasional jaw rumble in high 30s, birds, cows, significant Casino-Coraki Road noise at times