



Ref: L39320/BH/20-156

11 December 2020

KIS Plant Pty Ltd  
c/- Groundwork Plus  
6 Mayneview Street  
MILTON QLD 4064

**Attention: Mr Jim Lawler**

Dear Jim

**Re: December 2020 Noise Compliance Monitoring – Coraki Quarry, Coraki**

Noise compliance monitoring was conducted for the Coraki Quarry in December 2020 in accordance with Condition 5(c) of the Development Consent Schedule 3.

Noise monitoring was undertaken between 7:45am and 9:45am on 10 December 2020.

KIS Plant Pty Ltd (trading as KIS Quarries) has advised that no noise complaints have been received in relation to the Coraki Quarry since the previous September 2020 noise monitoring event.

Weather conditions were fine (no rainfall). Winds were predominantly from northwesterly directions. The wind conditions during the monitoring were assessed using the on-site weather station data to be below the 3 metres per second threshold for valid compliance monitoring in accordance with the Development Consent.

For certain locations/measurements, extraneous noise influences included:

- Bird calls – generally able to be substantially but not completely filtered out through post-processing using audio recordings
- Cicada noise – significant at one location
- Public road traffic noise - filtered out through on-site data exclusion where practical however background noise from Casino-Coraki Road was relatively consistent during one measurement

Coraki Quarry operations during the noise monitoring period were as follows:

- Main crushing and screening plant
- Excavator sorting and loading material
- Loading dump trucks by excavator and haulage from pit to plant
- Stockpile management
- Loading and dispatch of product (road) trucks
- No rock drill operating

Noise monitoring was undertaken over generally 15 minute periods at free-field locations within 30 metres of the following four (4) residential dwellings nearest to the Coraki Quarry (refer **Figure 1**):

- R1
- R4
- R6
- R7

Noise monitoring was undertaken using a Bruel & Kjaer Type 2250 frequency analysing sound level meter. The sound level meter was calibrated to a reference signal of 94 dB at 1kHz prior to the monitoring and displayed no variance post-monitoring.

Condition 4 of the Development Consent Schedule 3 prescribes a 35 dB(A)  $L_{Aeq,15min}$  noise limit for privately owned residences unless formal written agreements are in place with landowners.

As allowed for by Development Consent Schedule 3 Condition 4 and EPL Condition L4.2, formal written agreements are in place with the following landowners to the effect that the landowners do not hold objections to the operation of the Coraki Quarry exceeding the noise emission criterion by up to 5 dB(A):

- R1: 200 Lagoon Road, Coraki
- R6: 1905 Casino-Coraki Road, Coraki
- R7: 140 Newmans Road, Coraki

As allowed for by Development Consent Schedule 3 Condition 4 and EPL Condition L4.2, formal written agreements are in place with the following landowners to the effect that the landowners do not hold objections to the operation of the Coraki Quarry exceeding the noise emission criterion:

- R2: 95 Spring Hill Road, Coraki
- R3: 75 Spring Hill Road, Coraki

On the basis of the agreements in place with the owners of 95 Spring Hill Road and 75 Spring Hill Road there was no requirement for assessment of compliance with the noise limits at R2 and R3.

A summary of the 10 December 2020 compliance noise monitoring is provided in **Attachment 1**.

**During the 10 December 2020 noise monitoring period the Coraki Quarry was assessed to be compliant with the Development Consent and Environment Protection Licence No. 3397 noise limits.**

Further noise compliance monitoring is required by 31 March 2021 in accordance with Condition 5(c) of the Development Consent Schedule 3.

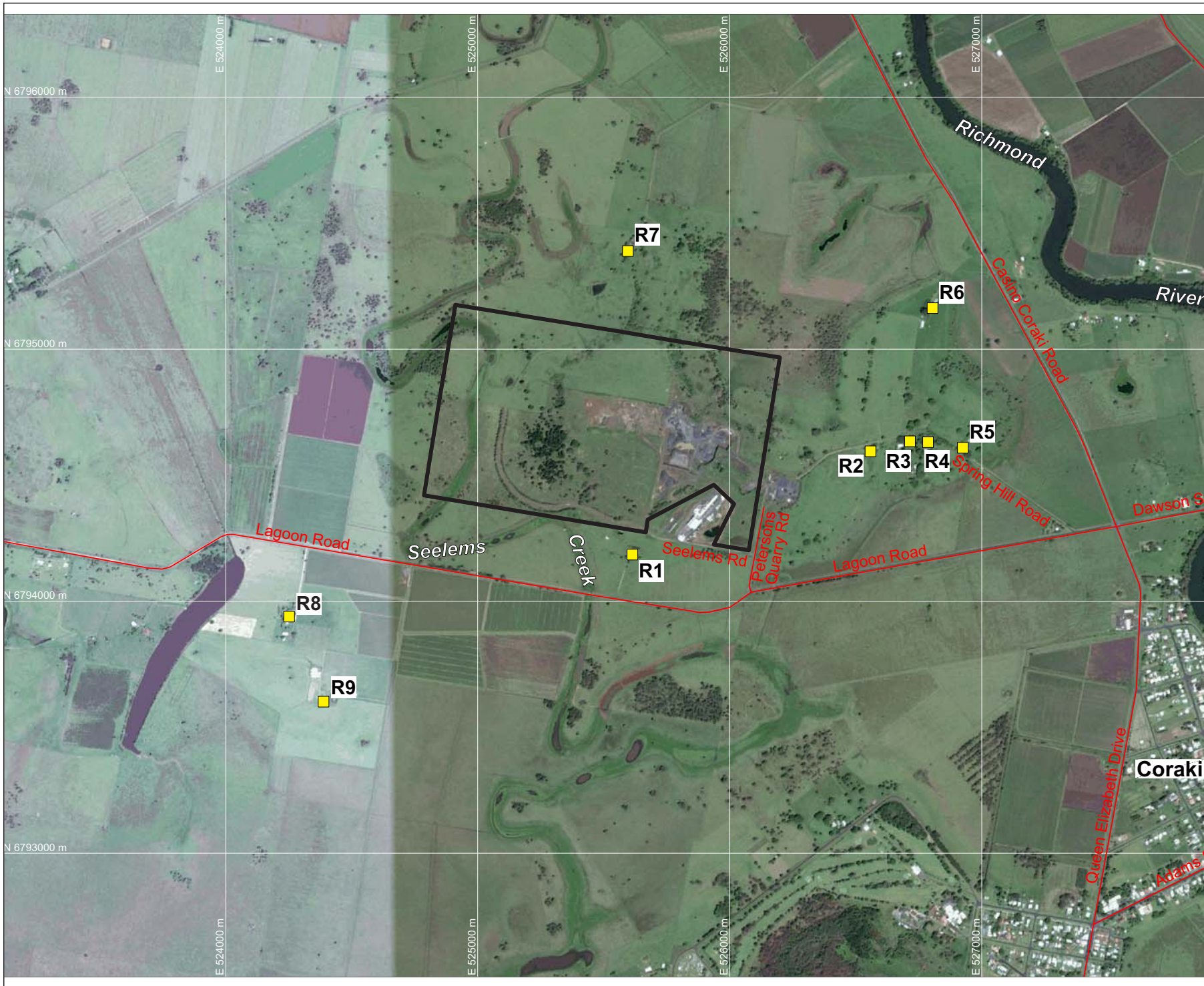
If you require any clarification or additional information please contact the undersigned.

Yours sincerely

A handwritten signature in black ink, appearing to read 'Ben Hyde', written in a cursive style.

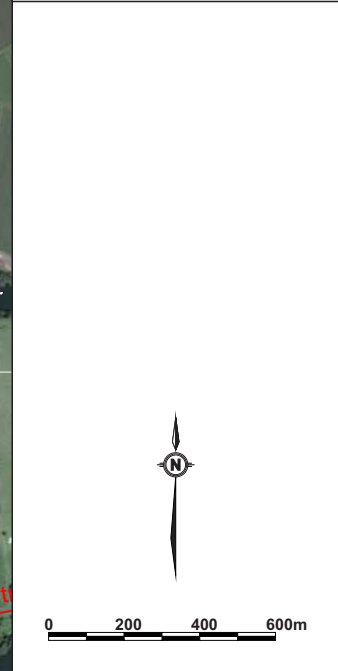
Ben Hyde  
Senior Environmental Engineer

## FIGURES



**LEGEND**  
 — SITE BOUNDARY  
 ■ R9 SURROUNDING RESIDENCES (R1-R9)

**DRAWING REFERENCE**  
 GROUNDWATER PLUS SITE LOCATION PLAN  
 1837.DRG.002, 13/04/15.



CLIENT  
**KIS PLANT PTY LTD**

PROJECT  
**CORAKI  
 NOISE COMPLIANCE  
 ASSESSMENT  
 CORAKI QUARRY**  
 Petersons Quarry Rd Coraki NSW

TITLE  
**AERIAL PHOTOGRAPH  
 SHOWING SURROUNDING  
 RESIDENCES**

JOB	CORAKI	<b>FIGURE 1</b>
JOB NO.	15-041	
DATE	16/12/16	DRAWING NUMBER
SCALE	1:20,000 (A4)	<b>15-041-1</b>
REV.		

Max Winders & Associates Pty Ltd tas MWA Environmental  
 Level 15, 241 Adelaide St, Brisbane, GPO BOX 3137, Brisbane Qld 4001  
 P 07 3002 5500 F 07 3002 5588 E mail@mwaenviro.com.au  
 W www.mwaenviro.com.au  
 ABN 94 010 833 084

# **ATTACHMENT 1**

*Summary of Compliance Noise Monitoring*

**CORAKI 20-156**

10/12/2020

MONITORING LOCATION	TIME	WIND	ASSESSED QUARRY NOISE Leq - dB(A)	OPERATIONS	NOISE LIMIT LAeq dB(A)	STATUS	NOTES
R1	840	2.2m/s NW	<32	Normal Operations no drilling	40	Compliant	Occasional precast facility bangs and gantry alarm, crushing plant just audible at times, birds, truck 32-33dBA, tip just audible, quarry <32 Leq overall, horses and cicadas at times.
R4	817	1.8m/s NW	<35dBA	Normal Operations no drilling	35	Compliant	Overriding cicada noise, quarry inaudible. Rechecked 2 more times over the morning and quarry remained inaudible over the cicada noise. Precast facility bangs a couple of times.
R6	908	2.2m/s NW	<34dBA	Normal Operations no drilling	40	Compliant	Birds, Casino-Coraki Rd traffic (consistent at times), plane paused, crushing plant just audible for short periods, overall quarry less than background L90 with Casino-Coraki Road traffic <35dB(A)
R7	750	1.3m/s W	<31dBA	Normal Operations no drilling	40	Compliant	Birds mostly distant, very distant traffic, resident's dog and voice at times, a few jaw rumbles audible early and occasional tip/crash but quarry generally inaudible, quarry well below background L90