



Ref: L14522/BH/20-156

24 June 2022

KIS Plant Pty Ltd  
c/- Groundwork Plus  
6 Mayneview Street  
MILTON QLD 4064

**Attention: Mr Jim Lawler**

Dear Jim

**Re: June 2022 Noise Compliance Monitoring – Coraki Quarry, Coraki**

Noise compliance monitoring was conducted for the Coraki Quarry in June 2022 in accordance with Condition 5(c) of the Development Consent Schedule 3.

Noise monitoring was undertaken between 11:45am and 1:15pm on 16 June 2022.

KIS Plant Pty Ltd (trading as KIS Quarries) has advised that no noise complaints have been received in relation to the Coraki Quarry since the previous March 2022 noise monitoring event.

Weather conditions were fine (no rainfall). Winds were either calm or from southwesterly directions and were measured in the field to be generally 0 to 2 metres per second. Wind speeds were assessed to be below the Development Consent wind speed threshold of 3 metres per second.

For certain locations/measurements, extraneous noise influences included:

- Bird calls – able to be substantially but not completely filtered out through post-processing using audio recordings
- Public road traffic noise – not able to be completely filtered out due to at times regular truck traffic on Lagoon Road including trucks associated with the haulage of regional flood waste stored at the quarry

Coraki Quarry operations during the noise monitoring period were as follows:

- Main crushing and screening plant
- Excavator sorting and loading material
- Loading plant from ROM pad
- Stockpile management
- Loading and dispatch of product (road) trucks
- Rock drilling at elevated bench

Noise monitoring was undertaken over generally 15 minute periods at free-field locations within 30 metres of the following three (3) residential dwellings nearest to the Coraki Quarry (refer **Figure 1**):

- R1
- R4
- R6

Noise monitoring was undertaken using a Bruel & Kjaer Type 2250 frequency analysing sound level meter. The sound level meter was calibrated to a reference signal of 94 dB at 1kHz prior to the monitoring and displayed no variance post-monitoring.

Condition 4 of the Development Consent Schedule 3 prescribes a 35 dB(A)  $L_{Aeq,15min}$  noise limit for privately owned residences unless formal written agreements are in place with landowners.

As allowed for by Development Consent Schedule 3 Condition 4 and EPL Condition L4.2, formal written agreements are in place with the following landowners to the effect that the landowners do not hold objections to the operation of the Coraki Quarry exceeding the noise emission criterion by up to 5 dB(A):

- R1: 200 Lagoon Road, Coraki
- R6: 1905 Casino-Coraki Road, Coraki

As allowed for by Development Consent Schedule 3 Condition 4 and EPL Condition L4.2, formal written agreements are in place with the following landowners to the effect that the landowners do not hold objections to the operation of the Coraki Quarry exceeding the noise emission criterion:

- R2: 95 Spring Hill Road, Coraki
- R3: 75 Spring Hill Road, Coraki
- R7: 140 Newmans Road, Coraki

On the basis of the agreements in place with the owners of 95 Spring Hill Road, 75 Spring Hill Road and 140 Newmans Road there was no requirement for assessment of compliance with the noise limits at R2, R3 and R7.

A summary of the 16 June 2022 compliance noise monitoring is provided in **Attachment 1**.

During the 16 June 2022 noise monitoring period the Coraki Quarry was assessed to be **compliant** with the Development Consent and Environment Protection Licence No. 3397 noise limits at the monitoring locations.

Further noise compliance monitoring is required by 30 September 2022 in accordance with Condition 5(c) of the Development Consent Schedule 3.

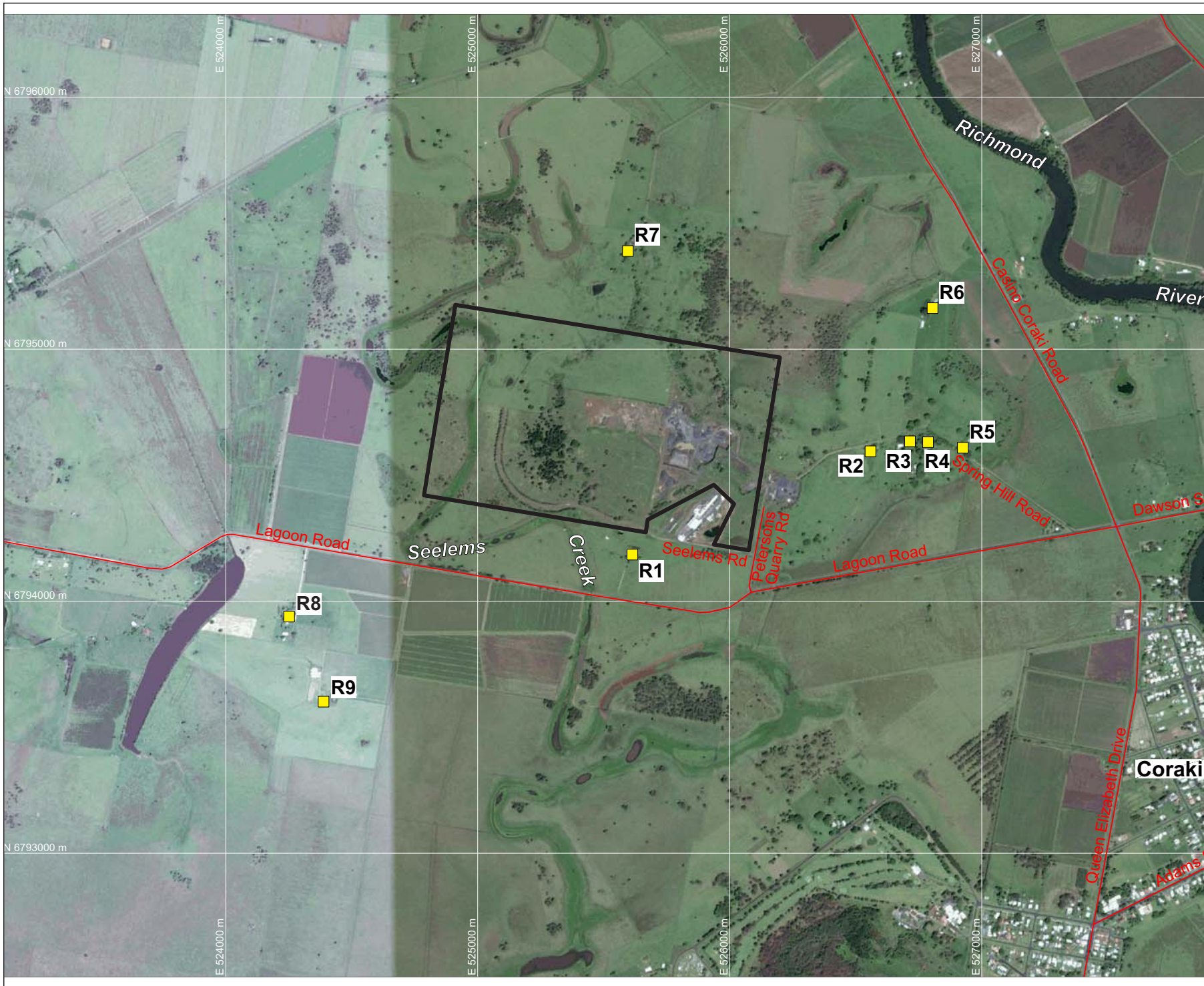
If you require any clarification or additional information please contact the undersigned.

Yours sincerely

A handwritten signature in black ink, appearing to read 'Ben Hyde', written in a cursive style.

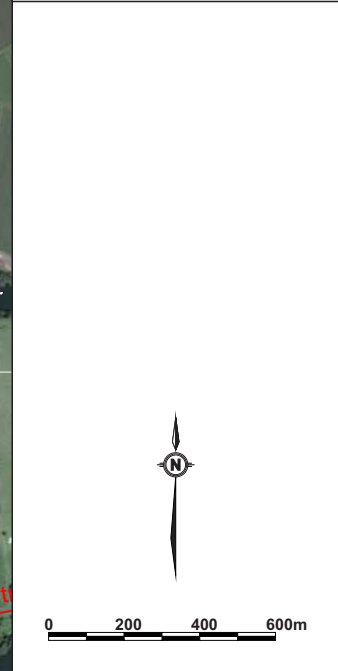
Ben Hyde  
Senior Environmental Engineer

## FIGURES



**LEGEND**  
 — SITE BOUNDARY  
 ■ R9 SURROUNDING RESIDENCES (R1-R9)

**DRAWING REFERENCE**  
 GROUNDWATER PLUS SITE LOCATION PLAN  
 1837.DRG.002, 13/04/15.



CLIENT  
**KIS PLANT PTY LTD**

PROJECT  
**CORAKI  
 NOISE COMPLIANCE  
 ASSESSMENT  
 CORAKI QUARRY**  
 Petersons Quarry Rd Coraki NSW

TITLE  
**AERIAL PHOTOGRAPH  
 SHOWING SURROUNDING  
 RESIDENCES**

JOB	CORAKI	<b>FIGURE 1</b>
JOB NO.	15-041	
DATE	16/12/16	DRAWING NUMBER
SCALE	1:20,000 (A4)	<b>15-041-1</b>
REV.		

  
 Max Winders & Associates Pty Ltd tas MWA Environmental  
 Level 15, 241 Adelaide St, Brisbane, GPO BOX 3137, Brisbane Qld 4001  
 P 07 3002 5500 F 07 3002 5588 E mail@mwaenviro.com.au  
 W www.mwaenviro.com.au  
 ABN 94 010 833 084

# **ATTACHMENT 1**

*Summary of Compliance Noise Monitoring*

**CORAKI 20-156**

16/06/2022

MONITORING LOCATION	TIME	WIND	ASSESSED QUARRY NOISE Leq - dB(A)	OPERATIONS	NOISE LIMIT LAeq dB(A)	STATUS	NOTES
R1	1150	Calm to 2 m/s SW gusts	<33	Normal Operations with drilling	40	Compliant	Steady-state engine/generator type noise just audible, few birds, quarry <33dBA, plane excluded, beeper from top pad at times (flood waste operations)
R4	1210	Calm to very light SW	<32	Normal Operations with drilling	35	Compliant	Lagoon Rd constant flood cleanup truck traffic and some quarry trucks, birds, plane partially excluded, quarry not audible when background <35dBA, processing plant just audible when background 31dBA so estimate quarry < 31dBA aside from reversing beepers occasionally audible due to tone (potentially from flood waste operations on the upper pad)
R6	1230	Calm to very light SW	<36	Normal Operations with drilling	40	Compliant	Casino-Coraki Rd traffic noise, birds, processing plant and drilling audible, some resident noise, quarry <37dBA and likely 35dBA, with drill about 35dBA