



Ref: L06920/BH/15-041

17 June 2020

Quarry Solutions Pty Ltd
c/- Groundwork Plus
6 Mayneview Street
MILTON QLD 4064

Attention: Mr Jim Lawler

Dear Jim

Re: June 2020 Noise Compliance Monitoring – Coraki Quarry, Coraki

MWA Environmental conducted noise compliance monitoring for the Coraki Quarry in June 2020 in accordance with Condition 5(c) of the Development Consent Schedule 3.

Noise monitoring was undertaken between 8:50am and 11:00am on 9 June 2020.

Quarry Solutions Pty Ltd has advised that no noise complaints have been received in relation to the Coraki Quarry since the previous March 2020 noise monitoring event.

Weather conditions during the monitoring period were generally fine with a scattered light rain shower during which monitoring was put on hold. Winds were predominantly from southwesterly directions. The wind conditions during the monitoring were assessed to be below the 3 metres per second threshold for valid compliance monitoring in accordance with the Development Consent with the exception of one measurement at 3.1m/s being 0.1m/s over the 3m/s threshold. This is insignificant and the measurement was assessed by MWA Environmental to be valid without undue influence on the noise monitoring results.

For certain locations/measurements, extraneous noise influences included:

- Bird calls – generally able to be substantially but not completely filtered out through post-processing using audio recordings
- Public road traffic noise - filtered out through on-site data exclusion where practical however background noise from Casino-Coraki Road and Lagoon was relatively consistent during a number of measurements

Coraki Quarry operations during the noise monitoring period were as follows:

- Main crushing and screening plant
- Excavator sorting and loading material
- Loading dump trucks by excavator and haulage from pit to plant
- Stockpile management
- Loading and dispatch of product (road) trucks

Noise monitoring was undertaken over generally 10 to 15 minute periods at free-field locations within 30 metres of the following four (4) residential dwellings nearest to the Coraki Quarry (refer **Figure 1**):

- R1
- R4
- R6
- R7

Noise monitoring was undertaken using a Bruel & Kjaer Type 2250 frequency analysing sound level meter. The sound level meter was calibrated to a reference signal of 94 dB at 1kHz prior to the monitoring and displayed no variance post-monitoring.

Condition 4 of the Development Consent Schedule 3 prescribes a 35 dB(A) $L_{Aeq,15min}$ noise limit for privately owned residences unless formal written agreements are in place with landowners.

As allowed for by Development Consent Schedule 3 Condition 4 and EPL Condition L4.2, formal written agreements are in place with the following landowners to the effect that the land owners do not hold objections to the operation of the Coraki Quarry exceeding the noise emission criterion by up to 5 dB(A):

- R1: 200 Lagoon Road, Coraki
- R6: 1905 Casino-Coraki Road, Coraki
- R7: 140 Newmans Road, Coraki

As allowed for by Development Consent Schedule 3 Condition 4 and EPL Condition L4.2, formal written agreements are in place with the following landowners to the effect that the land owners do not hold objections to the operation of the Coraki Quarry exceeding the noise emission criterion:

- R2: 95 Spring Hill Road, Coraki
- R3: 75 Spring Hill Road, Coraki

On the basis of the agreements in place with the owners of 95 Spring Hill Road and 75 Spring Hill Road there was no requirement for assessment of compliance with the noise limits at R2 and R3.

A summary of the 9 June 2020 compliance noise monitoring is provided in **Attachment 1**.

During the 9 June 2020 noise monitoring period the Coraki Quarry was assessed to be compliant with the Development Consent and Environment Protection Licence No. 3397 noise limits.

Further noise compliance monitoring is required by 30 September 2020 in accordance with Condition 5(c) of the Development Consent Schedule 3.

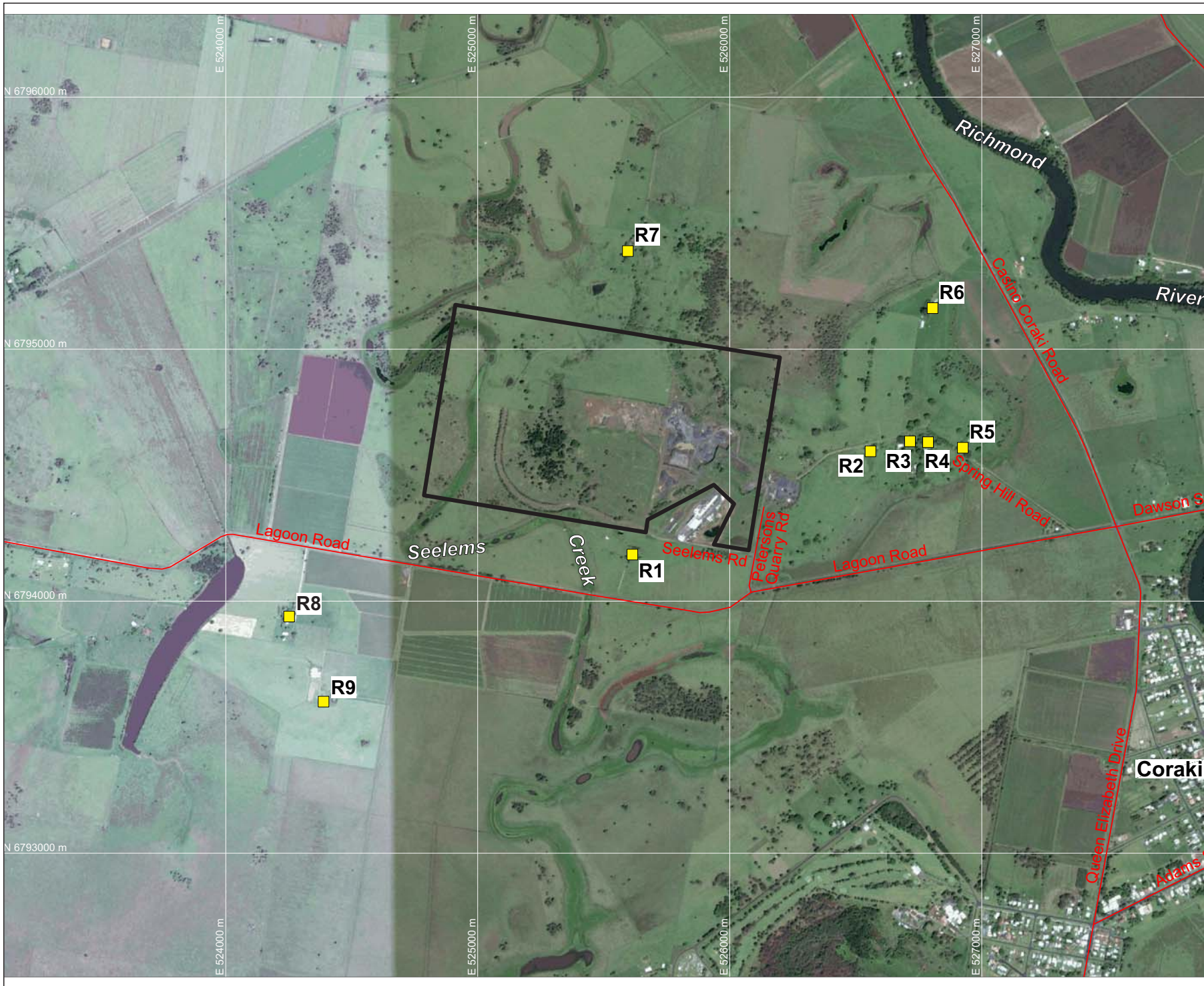
If you require any clarification or additional information please contact the undersigned.

Yours sincerely



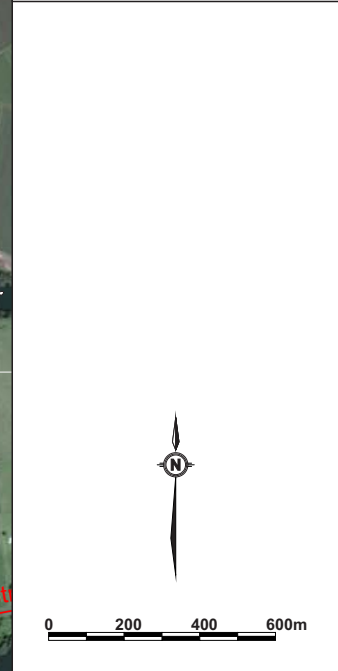
Ben Hyde
Senior Environmental Engineer

FIGURES



LEGEND
 — SITE BOUNDARY
 ■ R9 SURROUNDING RESIDENCES (R1-R9)

DRAWING REFERENCE
 GROUNDWATER PLUS SITE LOCATION PLAN
 1837.DRG.002, 13/04/15.



CLIENT
QUARRY SOLUTIONS PTY LTD

PROJECT
**CORAKI
 NOISE COMPLIANCE
 ASSESSMENT
 CORAKI QUARRY**
 Petersons Quarry Rd Coraki NSW

TITLE
**AERIAL PHOTOGRAPH
 SHOWING SURROUNDING
 RESIDENCES**

JOB	CORAKI	FIGURE 1
JOB NO.	15-041	
DATE	16/12/16	DRAWING NUMBER
SCALE	1:20,000 (A4)	15-041-1
REV.		

Max Winders & Associates Pty Ltd tas MWA Environmental
 Level 15, 241 Adelaide St, Brisbane, GPO BOX 3137, Brisbane Qld 4001
 P 07 3002 5500 F 07 3002 5588 E mail@mwaenviro.com.au
 W www.mwaenviro.com.au
 ABN 94 010 833 084

ATTACHMENT 1

Summary of Compliance Noise Monitoring

9/06/2020

MONITORING LOCATION	TIME	WIND	ASSESSED QUARRY NOISE Leq - dB(A)	OPERATIONS	NOISE LIMIT LAeq dB(A)	STATUS	NOTES
R1	930	0.9m/s S	<35dBA	Normal Operations no drilling	40	Compliant	Birds distant and nearfield, processing plant not audible, occasional trucks to top stockpiles 'low 40s', quarry <35dBA, some farm equipment to south, some concrete factory noise
R4	1025	3.1m/s SSW	<35dBA	Normal Operations no drilling	35	Compliant	Birds (a lot), Lagoon Road traffic (a lot), Casino-Coraki Road, quarry inaudible even when ambient at 35dBA, helicopter paused
R6	1000	2.2m/s WSW	<40	Normal Operations no drilling	40	Compliant	Birds, Casino-Coraki Road traffic, processing plant audible incl. jaw rumble at times but generally <40dBA, a few windier periods
R7	900	2.7m/s SSW	<36dBA	Normal Operations no drilling	40	Compliant	Birds distant and nearfield, resident tv/phone, processing plant just audible at <35/36 dBA generally with short periods approx 37dBA, occasional trucks audible but generally less than ambient est. 38dBA for a few seconds, some distant Casino-Coraki Rd traffic noise , excavator briefly audible