



Ref: L17619/BH/15-041

21 June 2019

Quarry Solutions Pty Ltd
c/- Groundwork Plus
6 Mayneview Street
MILTON QLD 4064

Attention: Mr Jim Lawler

Dear Jim

Re: June 2019 Noise Compliance Monitoring – Coraki Quarry, Coraki

MWA Environmental conducted noise compliance monitoring for the Coraki Quarry in June 2019 in accordance with Condition 5(c) of the Development Consent Schedule 3.

Quarry Solutions Pty Ltd has advised that no noise complaints have been received in relation to the Coraki Quarry since the previous March 2019 noise monitoring event.

Noise monitoring was undertaken between 12:00pm and 4:30pm on 18 June 2019.

Weather conditions during the monitoring period were fine with light winds from westerly directions between 12:00pm and 3:00pm, tending to south-easterly directions thereafter. Wind conditions during the monitoring were assessed to be below the 3 metres per second threshold for valid compliance monitoring in accordance with the Development Consent.

For certain locations/measurements, extraneous noise influences included:

- Bird calls – generally able to be substantially but not completely filtered out through post-processing using audio recordings
- Insect noise – minor influence for one measurement
- Public road traffic noise - filtered out through on-site data exclusion where practical however background noise from Casino-Coraki Road and Lagoon was dominant and relatively consistent during a limited number of measurements when winds were from the southeasterly directions

Coraki Quarry operations during the noise monitoring period were as follows:

- Main crushing and screening plant
- Excavator sorting and loading material at an elevated bench
- Loading dump trucks by excavator and haulage from pit to plant
- Stockpile management
- Loading and dispatch of product (road) trucks – consistent trucks throughout the monitoring period
- Rock drill at elevated bench

Noise monitoring was undertaken over generally 10 to 15 minute periods at free-field locations within 30 metres of the following four (4) residential dwellings nearest to the Coraki Quarry (refer **Figure 1**):

- R1
- R4
- R6
- R7

Noise monitoring was undertaken using a Bruel & Kjaer Type 2250 frequency analysing sound level meter. The sound level meter was calibrated to a reference signal of 94 dB at 1kHz prior to the monitoring and displayed no variance post-monitoring.

Condition 4 of the Development Consent Schedule 3 prescribes a 35 dB(A) $L_{Aeq,15min}$ noise limit for privately owned residences unless formal written agreements are in place with landowners.

As allowed for by Development Consent Schedule 3 Condition 4 and EPL Condition L4.2, formal written agreements are in place with the following landowners to the effect that the land owners do not hold objections to the operation of the Coraki Quarry exceeding the noise emission criterion by up to 5 dB(A):

- R1: 200 Lagoon Road, Coraki
- R6: 1905 Casino-Coraki Road, Coraki
- R7: 140 Newmans Road, Coraki

As allowed for by Development Consent Schedule 3 Condition 4 and EPL Condition L4.2, formal written agreements are in place with the following landowners to the effect that the land owners do not hold objections to the operation of the Coraki Quarry exceeding the noise emission criterion:

- R2: 95 Spring Hill Road, Coraki
- R3: 75 Spring Hill Road, Coraki

On the basis of the agreements in place with the owners of 95 Spring Hill Road and 75 Spring Hill Road there was no requirement for assessment of compliance with the noise limits at R2 and R3.

A summary of the 18 June 2019 compliance noise monitoring is provided in **Attachment 1**.

During the 18 June 2019 noise monitoring period the Coraki Quarry was assessed to be compliant with the Development Consent and Environment Protection Licence No. 3397 noise limits.

Further noise compliance monitoring is required by 30 September 2019 in accordance with Condition 5(c) of the Development Consent Schedule 3.

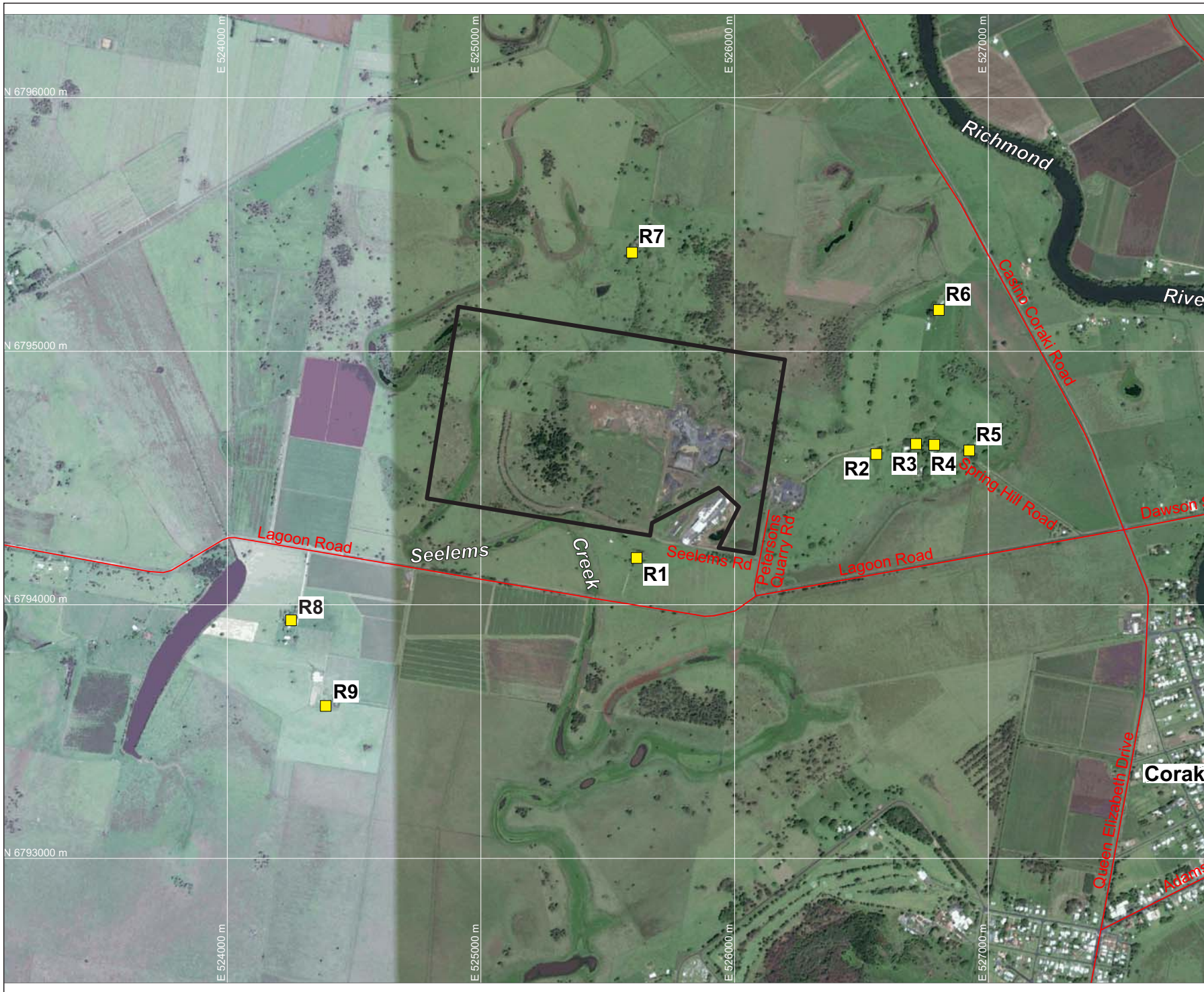
If you require any clarification or additional information please contact the undersigned.

Yours sincerely



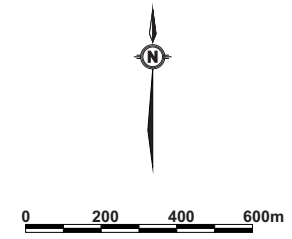
Ben Hyde
Environmental Engineer

FIGURES



LEGEND
 — SITE BOUNDARY
 ■ R9 SURROUNDING RESIDENCES (R1-R9)

DRAWING REFERENCE
 GROUNDWATER PLUS SITE LOCATION PLAN
 1837.DRG.002, 13/04/15.



CLIENT
QUARRY SOLUTIONS PTY LTD

PROJECT
**CORAKI
 NOISE COMPLIANCE
 ASSESSMENT
 CORAKI QUARRY**
 Petersons Quarry Rd Coraki NSW

TITLE
**AERIAL PHOTOGRAPH
 SHOWING SURROUNDING
 RESIDENCES**

JOB	CORAKI	FIGURE 1
JOB NO.	15-041	
DATE	16/12/16	DRAWING NUMBER
SCALE	1:20,000 (A4)	15-041-1
REV.		



Max Winders & Associates Pty Ltd tas MWA Environmental
 Level 15, 241 Adelaide St, Brisbane, GPO BOX 3137, Brisbane Qld 4001
 P 07 3002 5500 F 07 3002 5588 E mail@mwaenviro.com.au
 W www.mwaenviro.com.au
 ABN 94 010 833 084

ATTACHMENT 1

Summary of Compliance Noise Monitoring

MONITORING LOCATION	TIME	WIND	ASSESSED QUARRY NOISE Leq - dB(A)	OPERATIONS	NOISE LIMIT LAeq dB(A)	STATUS	NOTES
R1	1245	1 to 3 m/s W	<35dB(A)	Normal Operations, with rock drill	40	Compliant	Quarry only just audible as intermittent tip and truck noise, processing plant not audible above prevailing background noise, some birds, some wind/tree noise, quarry <35dB(A)
R1	1555	1.3m/s SE	<35dB(A)	Normal Operations, with rock drill	40	Compliant	Quarry not audible aside from occasional truck exhaust, buzzing noise to east (prefab factory maybe), Lagoon Road noise, insects, prefab factory bangs
R4	1400	Very light wind to Calm	<33dB(A)	Normal Operations, with rock drill	35	Compliant	Lagoon Rd noise (busy), birds, processing plant generally inaudible but just audible at times at <33dB(A) when ambient and road noise was lower
R4	1540	2.2m/s ESE	<34dB(A)	Normal Operations, with rock drill	35	Compliant	Lagoon Rd and Casino-Coraki Rd noise dominant in SE wind, quarry inaudible
R6	1340	1 to 3 m/s WSW	<39dB(A)	Normal Operations, with rock drill	40	Compliant	Casino-Coraki Rd noise, processing plant audible when less extraneous noise generally at 38-40dB(A) at times, birds
R6	1525	2.2m/s SE	<31dB(A)	Normal Operations, with rock drill	40	Compliant	Casino-Coraki Rd noise dominant in SE wind, minor birds, quarry inaudible
R7	1310	1 to 3 m/s WNW	<30dB(A)	Normal Operations, with rock drill	40	Compliant	Quarry inaudible, some birds, some wind/tree noise, quarry <30dB(A)
R7	1505	2.2m/s ESE	<34dB(A)	Normal Operations, with rock drill	40	Compliant	Truck exhaust audible occasionally when less extraneous noise but <35dB(A), birds, wind/tree noise, Casino-Coraki Road noise