



Ref: L08920/BH/15-041

31 March 2020

Quarry Solutions Pty Ltd  
c/- Groundwork Plus  
6 Mayneview Street  
MILTON QLD 4064

**Attention: Mr Jim Lawler**

Dear Jim

**Re: March 2020 Noise Compliance Monitoring – Coraki Quarry, Coraki**

MWA Environmental conducted noise compliance monitoring for the Coraki Quarry in March 2020 in accordance with Condition 5(c) of the Development Consent Schedule 3.

Noise monitoring was undertaken between 7:30am and 11:00am on 19 March 2020.

Quarry Solutions Pty Ltd has advised that no noise complaints have been received in relation to the Coraki Quarry since the previous December 2019 noise monitoring event.

Weather conditions during the monitoring period were fine with light winds predominantly from northwesterly directions. The wind conditions during the monitoring were assessed to be below the 3 metres per second threshold for valid compliance monitoring in accordance with the Development Consent.

For certain locations/measurements, extraneous noise influences included:

- Bird calls – generally able to be substantially but not completely filtered out through post-processing using audio recordings
- Public road traffic noise - filtered out through on-site data exclusion where practical however background noise from Casino-Coraki Road and Lagoon was dominant and relatively consistent during a number of measurements

Coraki Quarry operations during the noise monitoring period were as follows:

- Main crushing and screening plant
- Excavator sorting and loading material at an elevated bench
- Loading dump trucks by excavator and haulage from pit to plant
- Stockpile management
- Loading and dispatch of product (road) trucks
- Rock drill operating on the Peterson bench

Noise monitoring was undertaken over generally 10 to 15 minute periods at free-field locations within 30 metres of the following four (4) residential dwellings nearest to the Coraki Quarry (refer **Figure 1**):

- R1
- R4
- R6
- R7

Noise monitoring was undertaken using a Bruel & Kjaer Type 2250 frequency analysing sound level meter. The sound level meter was calibrated to a reference signal of 94 dB at 1kHz prior to the monitoring and displayed no variance post-monitoring.

Condition 4 of the Development Consent Schedule 3 prescribes a 35 dB(A)  $L_{Aeq,15min}$  noise limit for privately owned residences unless formal written agreements are in place with landowners.

As allowed for by Development Consent Schedule 3 Condition 4 and EPL Condition L4.2, formal written agreements are in place with the following landowners to the effect that the land owners do not hold objections to the operation of the Coraki Quarry exceeding the noise emission criterion by up to 5 dB(A):

- R1: 200 Lagoon Road, Coraki
- R6: 1905 Casino-Coraki Road, Coraki
- R7: 140 Newmans Road, Coraki

As allowed for by Development Consent Schedule 3 Condition 4 and EPL Condition L4.2, formal written agreements are in place with the following landowners to the effect that the land owners do not hold objections to the operation of the Coraki Quarry exceeding the noise emission criterion:

- R2: 95 Spring Hill Road, Coraki
- R3: 75 Spring Hill Road, Coraki

On the basis of the agreements in place with the owners of 95 Spring Hill Road and 75 Spring Hill Road there was no requirement for assessment of compliance with the noise limits at R2 and R3.

A summary of the 19 March 2020 compliance noise monitoring is provided in **Attachment 1**.

**During the 19 March 2020 noise monitoring period the Coraki Quarry was assessed to be compliant with the Development Consent and Environment Protection Licence No. 3397 noise limits.**

Further noise compliance monitoring is required by 30 June 2020 in accordance with Condition 5(c) of the Development Consent Schedule 3.

If you require any clarification or additional information please contact the undersigned.

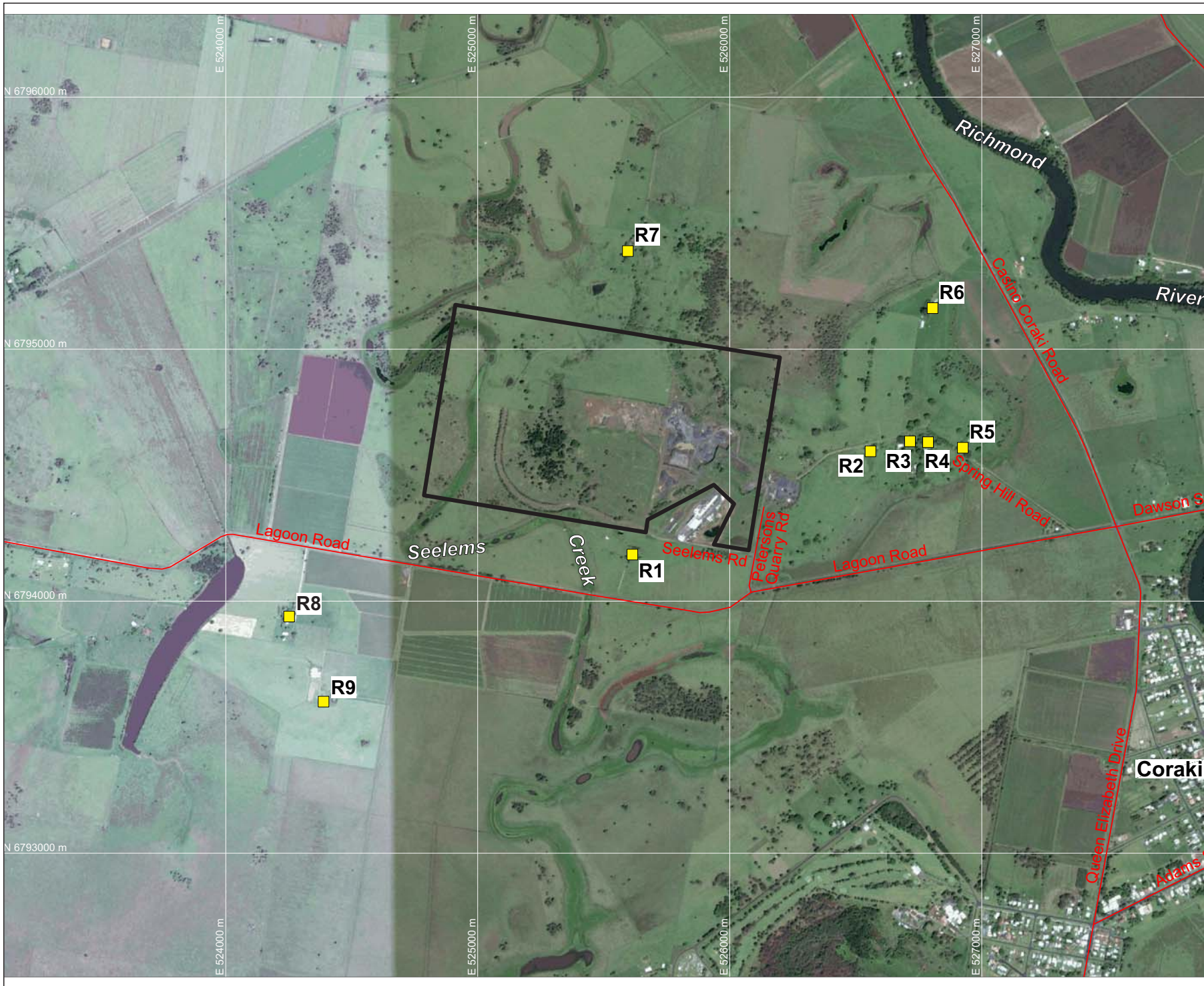
Yours sincerely



Ben Hyde  
Senior Environmental Engineer

## FIGURES





**LEGEND**  
 — SITE BOUNDARY  
 ■ R9 SURROUNDING RESIDENCES (R1-R9)

**DRAWING REFERENCE**  
 GROUNDWATER PLUS SITE LOCATION PLAN  
 1837.DRG.002, 13/04/15.

N

0    200    400    600m

CLIENT  
**QUARRY SOLUTIONS PTY LTD**

PROJECT  
**CORAKI  
 NOISE COMPLIANCE  
 ASSESSMENT  
 CORAKI QUARRY**  
 Petersons Quarry Rd Coraki NSW

TITLE  
**AERIAL PHOTOGRAPH  
 SHOWING SURROUNDING  
 RESIDENCES**

JOB	CORAKI	<b>FIGURE 1</b>
JOB NO.	15-041	
DATE	16/12/16	DRAWING NUMBER
SCALE	1:20,000 (A4)	<b>15-041-1</b>
REV.		

Max Winders & Associates Pty Ltd tas MWA Environmental  
 Level 15, 241 Adelaide St, Brisbane, GPO BOX 3137, Brisbane Qld 4001  
 P 07 3002 5500 F 07 3002 5588 E mail@mwaenviro.com.au  
 W www.mwaenviro.com.au  
 ABN 94 010 833 084

# **ATTACHMENT 1**

*Summary of Compliance Noise Monitoring*

19/03/2020

MONITORING LOCATION	TIME	WIND	ASSESSED QUARRY NOISE Leq - dB(A)	OPERATIONS	NOISE LIMIT LAeq dB(A)	STATUS	NOTES
R1	845	2.2m/sWNW	<36dBA	Normal Operations including drilling	40	Compliant	Birds, distant traffic to south, quarry inaudible aside from trucks on access and 'whining' noise that could be from the precast plant. Quarry well <40dBA
R1	1000	1.8m/s NW	<36dBA	Normal Operations including drilling	40	Compliant	Occasional trucks audible at 34-42 dB(A) on top stockpile pad, plant not audible
R4	825	1.3m/sWNW	<34	Normal Operations including drilling	35	Compliant	Birds, Lagoon Road traffic, cows, quarry not audible when ambient <34dBA aside from jaw (LF) just audible at times at approx. 35dBA during the first half of the measurement then barely audible
R4	940	1.8m/s NW	<34dBA	Normal Operations including drilling	35	Compliant	Quarry inaudible at ambient <33dBA aside from a few jam rumbles, Lagoon Road traffic, birds. A few jaw rumbles at <34 dB(A) later in measurement
R6	810	1.3m/sWNW	<40dBA	Normal Operations including drilling	40	Compliant	Crushing plant (jaw) audible, birds, dominant Casino-Coraki Road traffic, some jaw rumbles up to 45dBA , plant audible at low 40s for first part of measurement then below 40dBA thereafter, occasional truck engine audible
R6	1020	2.2m/s WNW	<37dBA	Normal Operations including drilling	40	Compliant	Casino-Coraki Road traffic, helicopter paused, some clangs audible, jaw rumble audible approx 38dBA when louder, a louder plant (jaw) period (when bin empty?)
R7	745	0.9m/s NNW	<37dBA	Normal Operations including drilling	40	Compliant	Casino-Coraki Road traffic to N dominant, birds + insects, couple of 'clunks' just audible because of lower frequency, quarry otherwise inaudible, quarry <38dBA
R7	920	2.7m/s WNW	<35dBA	Normal Operations including drilling	40	Compliant	Birds, Casino-Coraki Road traffic, birds, quarry not audible when ambient <37dBA. Quarry well <35dBA