



Ref: L30623/BH/20-156

11 December 2023

KIS Plant Pty Ltd
c/- Groundwork Plus
6 Mayneview Street
MILTON QLD 4064

Attention: Mr Jim Lawler

Dear Jim

Re: December 2023 Noise Compliance Monitoring – Coraki Quarry, Coraki

Noise compliance monitoring was conducted for the Coraki Quarry in December 2023 in accordance with Condition 5(c) of the Development Consent Schedule 3.

Noise monitoring was undertaken between 10:15am and 12:00pm on 6 December 2023.

KIS Plant Pty Ltd (trading as KIS Quarries) has advised that no noise complaints have been received in relation to the Coraki Quarry since the previous September 2023 noise monitoring event.

Weather conditions during the noise monitoring period were fine with no cloud cover or rainfall. Winds were predominantly from northwesterly directions. Wind speeds were measured in the field to be generally 1 to 2 metres per second. Wind speeds were assessed to be below the Development Consent wind speed threshold of 3 metres per second.

For certain locations/measurements, extraneous noise influences included:

- Public road traffic noise – not able to be completely filtered out due to distant background noise from regular traffic on Casino-Coraki Road
- Bird calls – able to be substantially but not completely filtered out through post-processing using audio recordings
- Resident mowing / quad bike noise at two locations
- Significant house construction noise (floor sanding) at one location

Coraki Quarry operations during the noise monitoring period were as follows:

- Main crushing and screening plant
- Excavator sorting and loading material
- Loading plant from ROM pad
- Stockpile management
- Loading and dispatch of product (road) trucks

Noise monitoring was undertaken over generally 15 minute periods at free-field locations within 30 metres of the following three (3) residential dwellings nearest to the Coraki Quarry (refer **Figure 1**):

- R1
- R4
- R6

Noise monitoring was undertaken using a Bruel & Kjaer Type 2250 frequency analysing sound level meter. The sound level meter was calibrated to a reference signal of 94 dB at 1kHz prior to the monitoring and displayed no variance post-monitoring.

Condition 4 of the Development Consent Schedule 3 prescribes a 35 dB(A) $L_{Aeq,15min}$ noise limit for privately owned residences unless formal written agreements are in place with landowners.

As allowed for by Development Consent Schedule 3 Condition 4 and EPL Condition L4.2, formal written agreements are in place with the following landowners to the effect that the landowners do not hold objections to the operation of the Coraki Quarry exceeding the noise emission criterion by up to 5 dB(A):

- R1: 200 Lagoon Road, Coraki
- R6: 1905 Casino-Coraki Road, Coraki

As allowed for by Development Consent Schedule 3 Condition 4 and EPL Condition L4.2, formal written agreements are in place with the following landowners to the effect that the landowners do not hold objections to the operation of the Coraki Quarry exceeding the noise emission criterion:

- R2: 95 Spring Hill Road, Coraki
- R3: 75 Spring Hill Road, Coraki
- R7: 140 Newmans Road, Coraki

On the basis of the agreements in place with the owners of 95 Spring Hill Road, 75 Spring Hill Road and 140 Newmans Road there was no requirement for assessment of compliance with the noise limits at R2, R3 and R7.

A summary of the 6 December 2023 compliance noise monitoring is provided in **Attachment 1**.

During the 6 December 2023 noise monitoring period the Coraki Quarry was assessed to be **compliant** with the Development Consent and Environment Protection Licence No. 3397 noise limits at the monitoring locations.

Further noise compliance monitoring is required by 31 March 2024 in accordance with Condition 5(c) of the Development Consent Schedule 3.

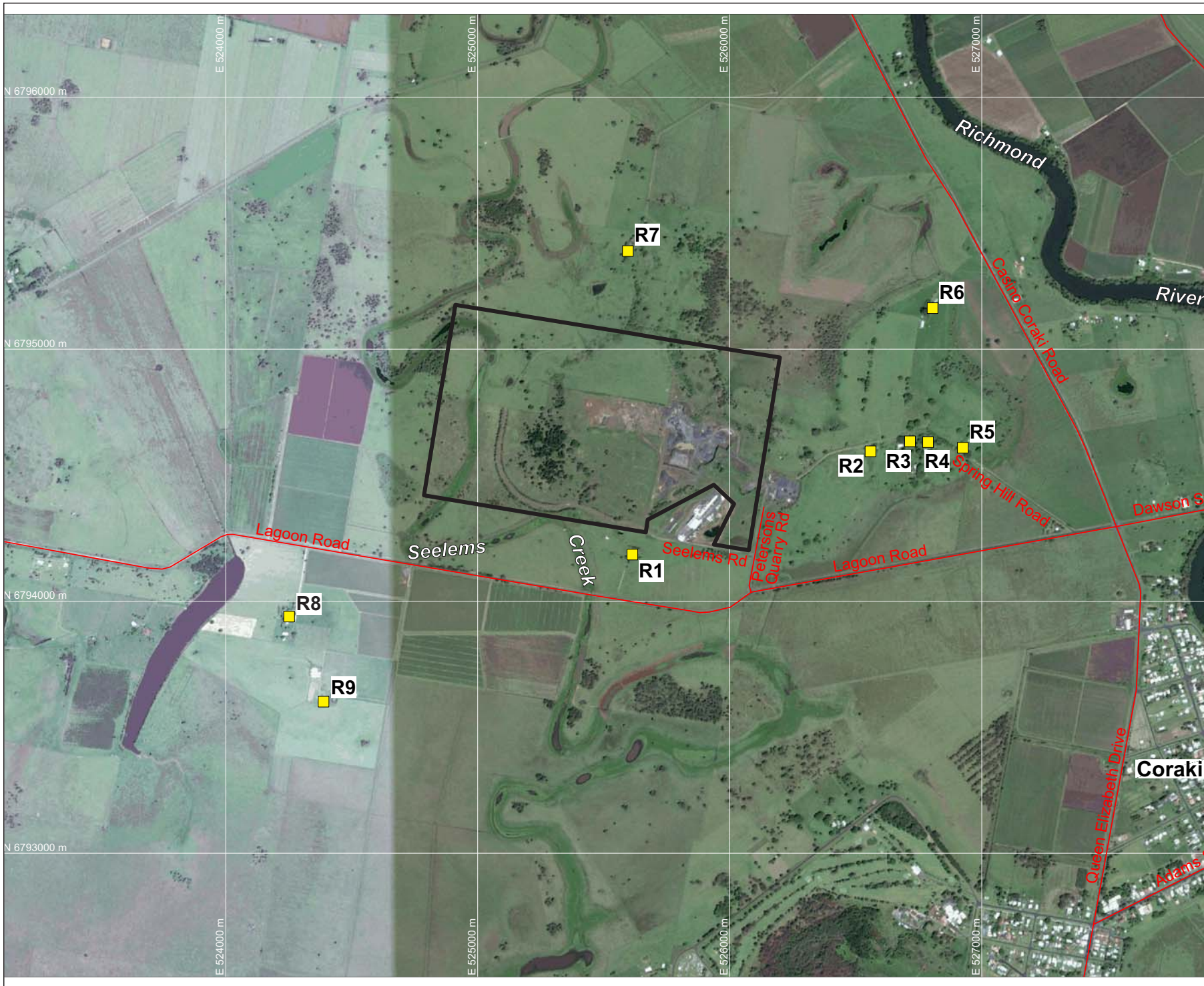
If you require any clarification or additional information please contact the undersigned.

Yours sincerely

A handwritten signature in black ink, appearing to read 'Ben Hyde', written in a cursive style.

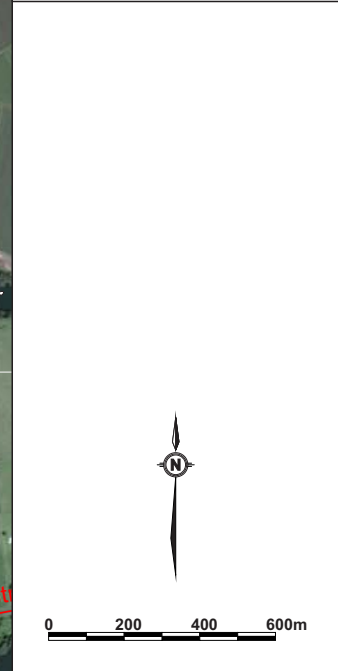
Ben Hyde
Senior Environmental Engineer

FIGURES



LEGEND
 — SITE BOUNDARY
 ■ R9 SURROUNDING RESIDENCES (R1-R9)

DRAWING REFERENCE
 GROUNDWATER PLUS SITE LOCATION PLAN
 1837.DRG.002, 13/04/15.



CLIENT
KIS PLANT PTY LTD

PROJECT
**CORAKI
 NOISE COMPLIANCE
 ASSESSMENT
 CORAKI QUARRY**
 Petersons Quarry Rd Coraki NSW

TITLE
**AERIAL PHOTOGRAPH
 SHOWING SURROUNDING
 RESIDENCES**

JOB	CORAKI	FIGURE 1
JOB NO.	15-041	
DATE	16/12/16	DRAWING NUMBER
SCALE	1:20,000 (A4)	15-041-1
REV.		


 Max Winders & Associates Pty Ltd tas MWA Environmental
 Level 15, 241 Adelaide St, Brisbane, GPO BOX 3137, Brisbane Qld 4001
 P 07 3002 5500 F 07 3002 5588 E mail@mwaenviro.com.au
 W www.mwaenviro.com.au
 ABN 94 010 833 084

ATTACHMENT 1

Summary of Compliance Noise Monitoring

CORAKI 20-156

6/12/2023

MONITORING LOCATION	TIME	WIND	ASSESSED QUARRY NOISE Leq - dB(A)	OPERATIONS	NOISE LIMIT LAeq dB(A)	STATUS	NOTES
R6	1030	1 to 2m/s NW	<32	Normal Operations no drilling	40	Compliant	Significant Casino-Coraki Rd noise from north and east, bird noise at times, plane and resident noise paused / excluded as far as possible, quarry inaudible aside from just audible tip and processing plant for a short period when there was less Casino-Coraki Rd noise and background was <31dB(A)
R4	1105	1 m/s NW	<31	Normal Operations no drilling	35	Compliant	Some Casino-Coraki Rd noise from north and east, bird noise at times excuded to extent practical, resident mower restarted at end of the measurement (excluded), quarry processing plant barely audible at 31dBA background level with no other quarry noise audible
R1	1140	1 to 2m/s NW	<35	Normal Operations no drilling	40	Compliant	Significant and relatively consistent construction noise at house (floor sanding and air compressor) precluded detailed noise level assessment but the quarry noise was not audible when construction noise stopped for short periods and background noise level was less than 35 dBA